

# Lumen® Dynamic Connections

Get real-time network provisioning with built-in threat protection.

Lumen® Dynamic Connections provides secure, real-time connectivity to your data center and cloud environments. Using the secure portal, you choose the bandwidth speed and which locations to connect, when you demand it. With a pay-as-you-go model, you have the control and flexibility to better manage network infrastructure expenses. And by utilizing our private network, your connection is inherently secure and exposure to external threats is minimized. Our global network, widespread visibility, and portfolio of security services add additional layers of protection.

## Benefits

### Fast provisioning

Connect or disconnect private services to cloud and data center environments in real time via the self-serve portal.

### Pay as you go

Only pay for what you use. Every Dynamic Connection is billed on an hourly rate with no long-term contract and no early termination fees\*.

### Global reach

On-net connectivity to AWS, Microsoft Azure, Google Cloud, Oracle, IBM and 2,200+ third-party data centers in North America, Europe and Asia-Pacific.

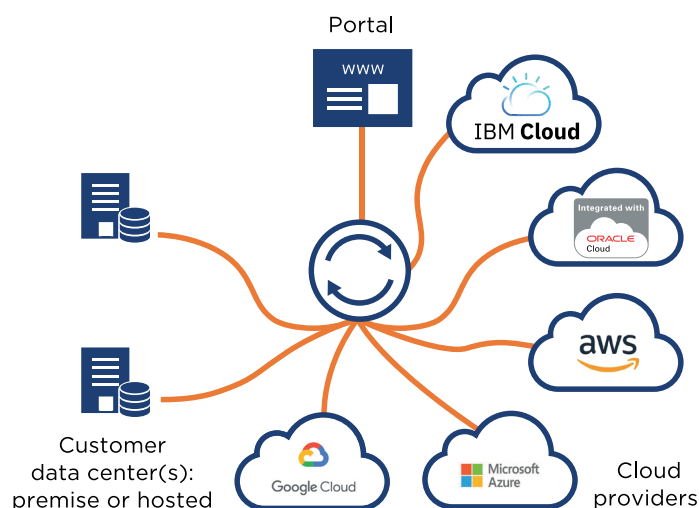
### Secure connectivity

By utilizing the Lumen private network, your connection is inherently secure, minimizing your exposure to external threats.

\*A Lumen master services agreement for network services with minimum term and early termination fees is required to gain access to Dynamic Connections.

## Why Lumen?

Lumen delivers a highly secure and globally connected network platform with the convenience to order Lumen® Cloud Connect Dynamic Connections as you choose. Manage secure, reliable, high-performance, scalable, private any-to-any/point-to-point WAN connectivity on demand and spend less time managing traffic and more time focusing on your business.



## Features

- Lumen® Dynamic Connections links your data center and cloud environments in real time. Get a fast, secure and flexible link between your data center and cloud environments
- Accelerate order delivery from days or weeks to near real-time
- Pay-as-you-go billing model
- Access the service via secure portal
- On-net connectivity to AWS, Azure, Google Cloud, Oracle, IBM and over 2,200 third-party data centers
- Bandwidth speeds up to 30G