

Lumen® Secure Router

Lumen Secure Router delivers simplified, cost-effective network termination and management for mid-market and enterprise customers navigating digital transformation. As the next evolution of Lumen Managed Network Services, it offers managed connectivity with proactive monitoring, traffic analytics, and integrated security—all on a future-ready platform. With “soft” upgrade paths to SD-WAN and full SASE capabilities businesses gain scalable performance and visibility while managing complexity. Lumen Secure Router is available globally in 140 countries.

Future-ready connectivity

Lumen Secure Router delivers reliable, scalable managed routing for Internet and MPLS VPN services—built to evolve with your business. With a simple upgrade path to SD-WAN and full SASE capabilities, customers gain a future-ready platform that adapts to changing needs without costly hardware replacements or complex migrations.

Integrated security without complexity

Protect your network with built-in stateful firewall capabilities and optional Next Generation Firewall (NGFW) services including Intrusion Detection and Prevention (IDS/IPS), content filtering, and deep packet inspection/SSL decryption – all deployable on the same premises device. Lumen Secure Router enables seamless security enhancements without additional equipment, to help businesses reduce risk while maintaining operational simplicity.

Enhanced visibility and control

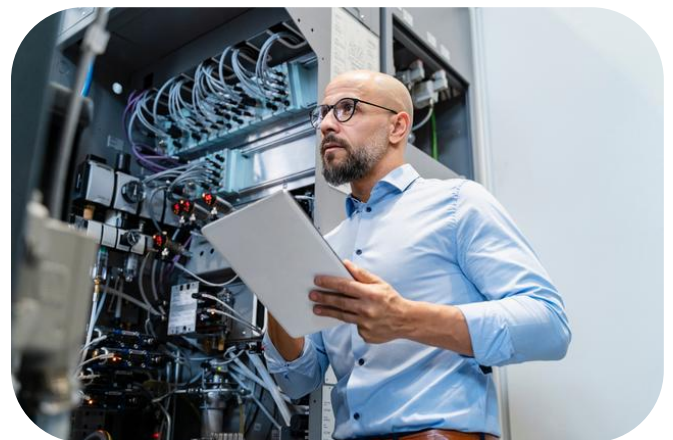
Gain deep insights into network and application-level performance (Layer 3-7) with advanced analytics that help identify rogue usage, optimize traffic, and monitor compliance. From social media to unknown IT applications, Lumen Secure Router empowers teams to monitor and manage what matters most.

Common use cases

- Managed Internet or MPLS VPN connectivity
- Integrated firewall with NGFW security
- Soft upgrade path to SD-WAN and full SASE services
- Traffic analytics by application to identify usage
- Proactive monitoring and auto-ticketing

Industry use cases

- **Retail** - enables secure, reliable connectivity across multiple store locations, providing firewall protection that safeguards customer data
- **Manufacturing** - enables resilient connectivity for distributed facilities and production sites, and advanced analytics for efficiency
- **Healthcare** - supports compliant connectivity across clinics and hospitals, enabling reliable access to critical applications



Features and Specifications

Lumen Secure Router is a Versa SASE-based device configured as a stand-alone router

The Versa platform provides centralized visibility into applications and devices, along with reports. The Lumen Secure Router can be configured for resilient performance.

Standard routing features

- WAN: DIA and VPN support eBGP, NAT and BFD
- LAN: VLAN tagging of sub-interfaces, DHCP, VRRP, OSPF, BGP
- Stateful Firewall - Standard

Advanced security features

- Optional Versa Next Generation Firewall (NGFW) including Intrusion Detection and Prevention (IDS/IPS), Anti-Virus, Deep Packet Inspection and URL content filtering
- Future "soft" upgrade path to a full SD-WAN/SASE network if desired

Device specifications with approximate maximum throughput speeds*

- Small
 - Throughput: up to 600 Mbps
 - 150 Mbps with NGFW
 - 5 - GE RJ45 ports; 2 - 1G SFP ports
 - Single external power supply
 - Rack mountable
- Medium
 - Throughput: up to 2Gbps
 - 200 Mbps with NGFW
 - 5 - GE RJ45 ports; 2 - 1G SFP ports
 - Single external power supply
 - Rack mountable
- Large
 - Throughput: up to 5 Gbps
 - 800 Mbps with NGFW
 - 4 - GE RJ45 ports; 4 - 1G/10G SFPs
 - Dual internal power supplies
 - 4-point rack mountable
- X-Large
 - Throughput: up to 8.2 Gbps
 - 1.5 Gbps with NGFW
 - 8 - GE RJ45 ports; up to 12 1G/10G SFP+

- Dual internal power supplies
- 4-point rack mountable

*Note: Benchmark aggregate throughput performance is established as follows: Lumen uses 1,000 bi-directional flows with iMIX frame sizes and a 0.5% acceptable frame loss rate to provide throughput measurements for each appliance. Next Gen Firewall is turned off. Performance with Next Gen Firewall is given with IPS features turned on. Performance will vary with features chosen. Please work with your Lumen Solutions Engineer to determine the best fit for your performance needs.

Monitoring and Ticketing

Lumen Secure Router offers monitoring and auto-ticketing through the Versa Controller with alarm processing and ticket enrichment through the Lumen Ticketing System. Access to ticketing is provided through the Lumen Control Center Portal:

- Device/Branch down with auto-ticketing after 5 minutes
- Circuit down with auto-ticketing after 12 minutes

Installation

- Can be self-installed
- Optional on-site installation is available in the US and 140 countries

Why Lumen?

Lumen is a proven leader in managing complex networks and equipment seamlessly. Our team of experts will manage your solution using best practices developed over decades of experience with thousands of customers. Lumen is building the backbone for the AI economy.