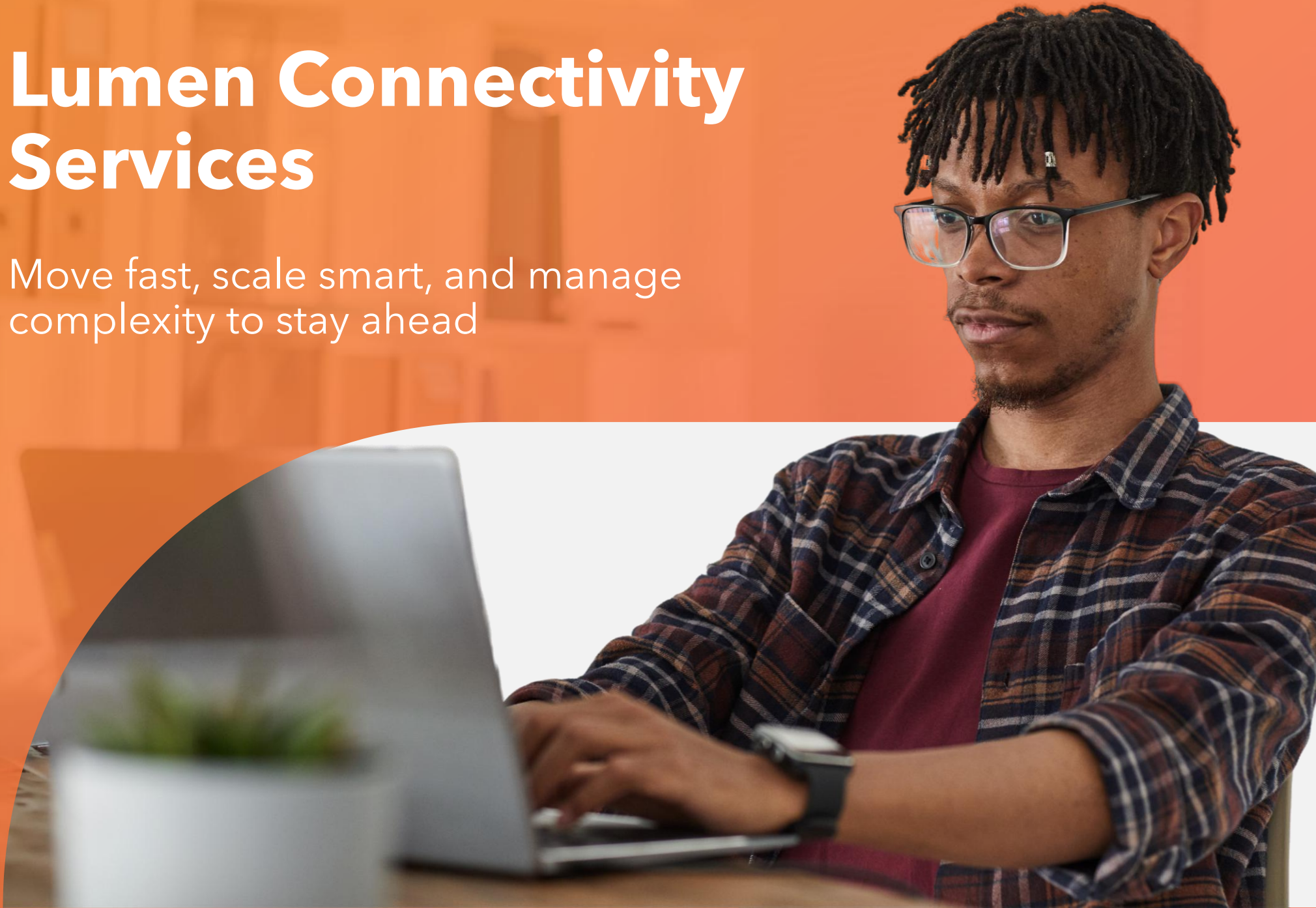


LUMEN®

Lumen Connectivity Services

Move fast, scale smart, and manage
complexity to stay ahead

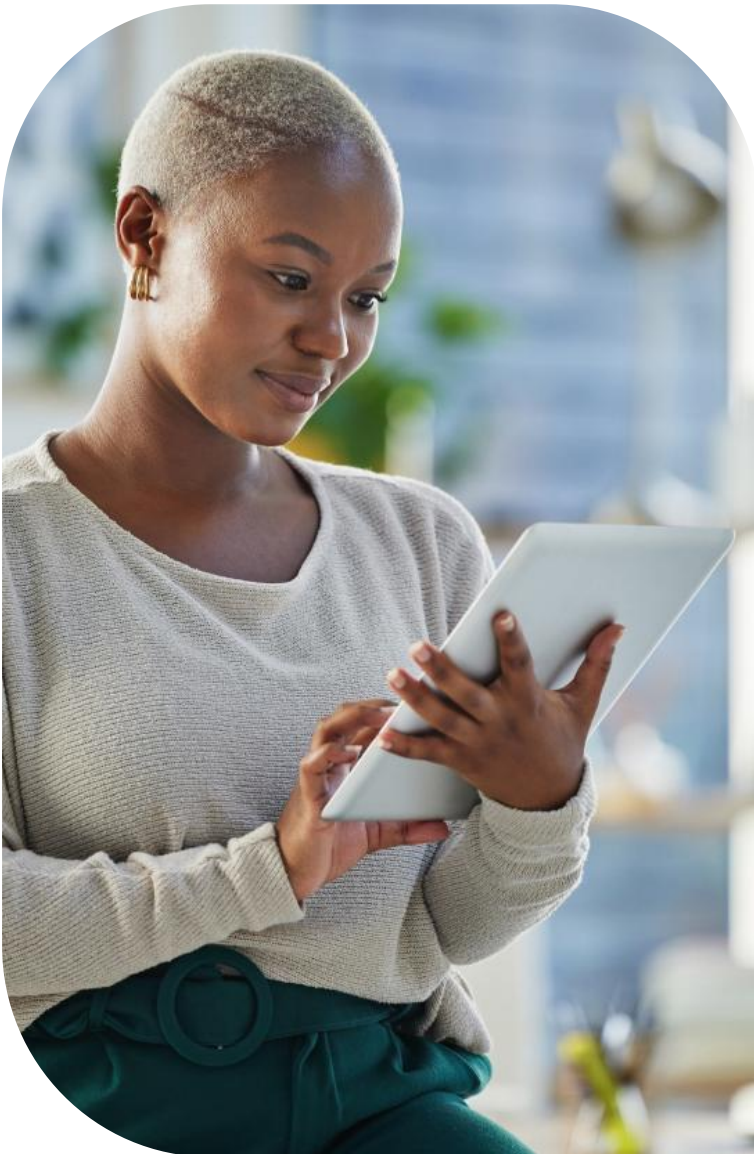


Why Lumen Connectivity Services power the future of your business

Your business thrives on reliable, agile connectivity. Lumen Connectivity Services deliver the high-performance, scalable infrastructure you need to power growth and innovation. Whether you're enabling cloud agility, supporting AI-driven workloads, or connecting hybrid environments, Lumen's portfolio adapts to your evolving needs.

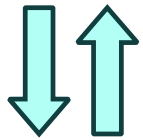
Our comprehensive on-demand, public, private, and cloud-integrated connectivity solutions are designed to meet growing business demands and optimize next-generation application performance for greater efficiency and productivity. Built on a future-ready network delivering 400G today and progressing toward 800G readiness, Lumen Connectivity Services support AI-driven, data-intensive workloads with the scale, performance, and elasticity modern enterprises require. With low latency, high bandwidth, and secure connections, your applications run smoothly on a network that scales with your ambitions.

Security is foundational to every Lumen Connectivity Service – backed by award-winning threat intelligence and continuous monitoring from Black Lotus Labs® across the Lumen IP backbone. With multilayered protection, proactive cybersecurity, and managed service options, you stay secure without added complexity.



Explore Lumen Connectivity Services

Lumen Connectivity Services offer powerful, flexible options to address the unique needs of your business. All services are delivered over Lumen's high-capacity, software-defined network—designed to scale from incremental bandwidth needs to ultra-high-capacity AI workloads.



On-Demand Services

Deploy and adjust connectivity within minutes with usage-based pricing and digital self-service. Scale bandwidth, add locations, or activate new public and private connections on a single port in real time—empowering your business to respond quickly to changing needs.



Public Connectivity Services

Reliable, enterprise-grade Internet solutions deliver secure, scalable connectivity for everyday operations and mission-critical applications. Built on our Tier-1 IP backbone, Lumen public connectivity emphasizes reach, performance, and built-in security.



Private Connectivity Services

Proven Ethernet and IP VPN services provide secure, high-capacity site-to-site transport with flexible topologies and bandwidth options. Ideal for distributed enterprise environments and hybrid networking needs.



Multicloud Connectivity Services

Modernize complex hybrid and multicloud environments with secure, high-speed connections across data centers, clouds, and edge locations. Simplify interoperability with a single, high-performance platform for distributed, data-intensive, and AI-driven workloads.



Compare services to find your best fit

Legend: ● Best fit ◐ Supported / situational fit ○ Not primary use case

	Public Connectivity		Private Connectivity		
	On-Demand <i>Best when speed and flexibility matter most</i>	Fixed <i>Best when Internet access is the priority</i>	On-Demand <i>Best when speed and flexibility matter most</i>	Fixed <i>Best when predictability and isolation matter</i>	Multicloud <i>Best for multicloud data movement</i>
What are you connecting?					
Connect people/apps to the public internet	●	●	○	○	○
Connect sites to sites privately	○	○	●	●	●
Connect sites/data centers to clouds privately	○	○	●	●	●
Connect cloud-to-cloud	○	○	◐	◐	●
Speed to provision & change					
Time to provision	minutes	weeks	minutes	weeks	minutes
Pricing model	Usage-based/elastic	Contract/predictable	Usage-based/elastic	Contract/predictable	Usage-based/elastic
Scale bandwidth	●	◐	●	◐	●
Add services on the same port	●	○	●	○	●
Centralized visibility & changes	●	◐	●	◐	●
API-driven automation	●	○	●	○	●
Performance & reliability					
Deterministic performance for mission-critical apps	◐	◐	●	●	●
Predictable performance when bandwidth bursts	●	○	●	○	●
High-capacity & future-ready scale	Up to 100G	Up to 400G	Up to 100G	Up to 400G	Up to 100G
Security					
Backbone-level threat visibility & monitoring by Black Lotus Labs	●	●	●	●	●
Security add-ons	Proactive threat blocking, DDoS protection	DDoS protection, SD-WAN, SASE	○	SASE	○
Reach & availability					
Geographic availability	North America	Global reach	North America	Global reach	North America

Lumen On-Demand Services

Reliable connectivity plus cloud-like agility

Lumen On-Demand Services empower your business to deploy and adjust connectivity in minutes, paying only for what you use. Powered by our #1 peered IP network*, ultra-low-loss fiber, and advanced threat intelligence, these services let you select from a suite of world-class private and public options to meet a wide range of needs.

With the flexibility of Lumen's cloud-enabled platform, you can scale network resources up or down in minutes as demand changes, add new locations, or activate services in real time on a single port. This agility helps your business grow in any direction the market dictates—without overcommitting resources.

On-demand services are ideal for supporting AI and real-time applications, managing fluctuating needs, and enabling rapid digital transformation. Integrated APIs and a self-service portal provide deep visibility and control, while built-in security helps you stay protected as you evolve.

“ We chose Lumen Network-as-a-Service for its simplicity, **cost efficiency and flexibility. Our partnership with Lumen allows us to manage and scale bandwidth as needed, ensuring our infrastructure is future-proofed and responsive to our dynamic needs.**”

- **Juan Ayala**

Director of IT Infrastructure, Agilysys



*The Center for Applied Internet Data Analysis (CAIDA), AS Rank, February 2025



On-Demand Services Highlights

Network management ease

- Usage-based pricing helps you optimize costs and scale services as needed
- Digital self-service portal for near-instant provisioning, bandwidth adjustments, and location activation, and performance monitoring
- Integrated APIs for seamless automation and technology integration
- Lumen Connectivity Fabric (LCF) enables you to add On-Demand Services and other edge and security services over the same port—simplifying deployment and minimizing cost

Scalable high-performance connectivity

- Built on Lumen's ultra-low-loss fiber and #1 peered IP network for speed and reliability
- Supports up to 400 Gbps today, with a future-ready architecture progressing toward 800G, for high-capacity, latency-sensitive and AI-driven workloads
- Expanding metro edge and data center footprint for fast access to cloud and edge services
- Nationwide availability at 10M+ U.S. locations

Flexible security options

- AI-enabled threat intelligence powered by Black Lotus Labs®
- Optional security add-ons for DDoS protection, compliance-grade monitoring, and simplified management

Public Connectivity Services

High-speed connectivity with built-in security

Lumen is the #1 Most Selected IP Network by Fortune 500 Companies.* Featuring [Internet Services](#) built to streamline operations, unleash performance with scalable connectivity tailored to your evolving business needs.

Choose from a range of services, including Internet On-Demand, Dedicated Internet Access, Dedicated Internet Extension, and High-Speed IP. These solutions are designed to support everything from basic connectivity to mission-critical applications with consistent performance and built-in security.

Harness the power of Lumen's Tier-1 internet backbone, the #1 most peered global network. With the most reach and share of IP addresses worldwide, Lumen delivers leading performance, scale, and reliability.

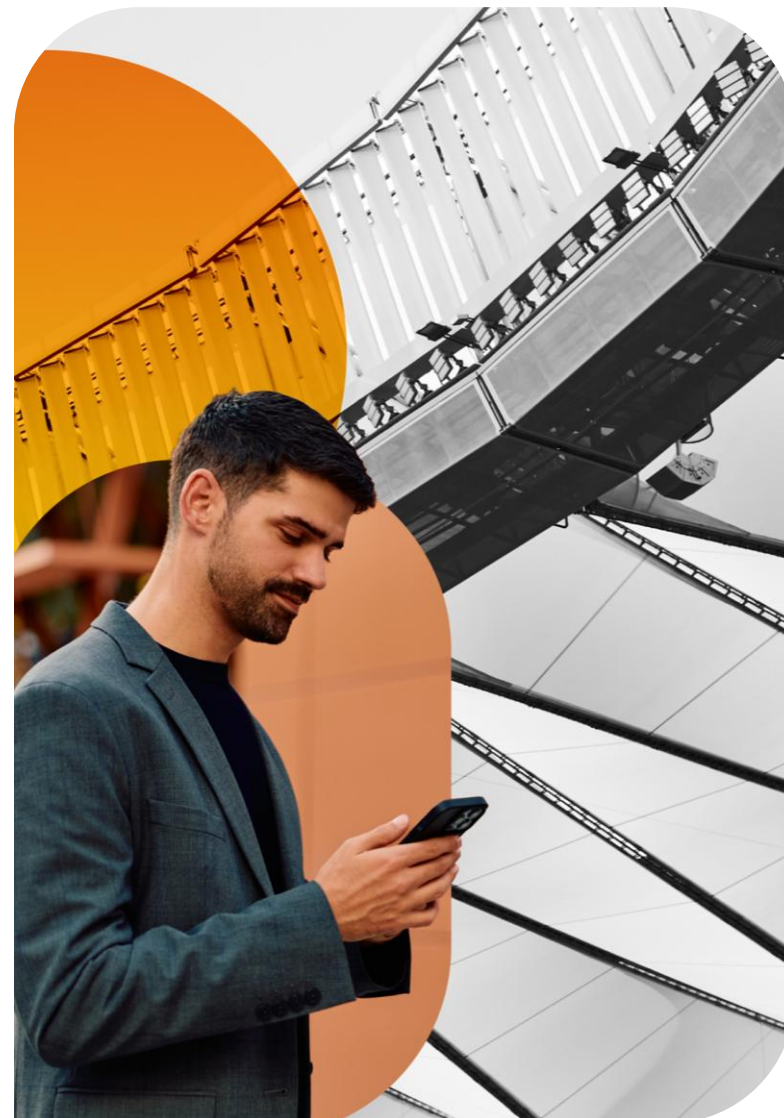


We have been using Lumen services for more than 10 years. Keeping our core network infrastructure with the same company, same bill and same team [is] extremely beneficial. We rely on the Lumen Network being stable and diversely peered [to allow] our data to flow efficiently."

- Matthew Spero

SVP, IT Infrastructure
Hanmi Bank

Current Lumen customer compensated for their endorsement.



*Telegeography, IP Networks, October 2025



Private Connectivity Services Highlights

Leading network performance and reliability

- Support for 400G interfaces with High-Speed IP for data-intensive workloads
- The network with the #1 most Reach and Share of IP Addresses Globally and extensive local peering helps minimize network hops and optimize traffic
- Enterprise-grade reliability backed by a 99.99% service availability SLA and 24/7 technical support
- Symmetrical speeds and scalable bandwidth options to support growth and mission-critical applications
- Optimize network design with path diversity through LDIE—no need to manage multiple vendors
- Flexible port, routing and billing options that scale as your business grows

Built-in security and visibility

- Integrated DDoS mitigation and proactive threat monitoring powered by Black Lotus Labs®
- Optional managed security services for compliance and advanced protection
- Centralized network management and visibility with Lumen Connect

Private Connectivity Services

Secure, predictable connectivity for mission-critical traffic

Lumen Private Connectivity Services deliver secure, high-capacity connectivity for organizations that require consistent performance, low latency, and traffic isolation. Designed for mission-critical applications and data-intensive workloads, these services provide the reliability enterprises need as networks become more distributed.

Built on Lumen-owned infrastructure, private connectivity enables deterministic routing, flexible architectures, and scalable bandwidth across enterprise locations, data centers, and cloud environments. Designed to support steady, always-on traffic or dynamically adjust capacity as business needs change—without sacrificing performance or control.

With integrated visibility, strong SLAs, and a security-first foundation, Lumen Private Connectivity Services help organizations reduce complexity, protect sensitive data, and confidently support modern application architectures, including real-time and AI-driven use cases.



The network connectivity is like oxygen: You trust it's there, and you never even think about it. Our team is responsible for the critical network infrastructure planning at AWS events and Lumen helps us ensure no one notices because it always works."

- Brian Searcy

Principal Technical Program Manager for Networking
Amazon Integrated Security, AWS (Amazon Web Services)
Current Lumen customer compensated for their endorsement.





Private Connectivity Services Highlights

Flexible architectures, deterministic performance

- Support point-to-point, multipoint, and mesh topologies across sites, data centers, and hybrid environments
- Choose established private connectivity for steady workloads or on-demand services to scale capacity as needs change
- Scalable bandwidth options up to 400 Gbps for data-intensive workloads
- Deliver SLA-backed predictable latency, low packet loss, and traffic isolation for mission-critical applications

Built on a secure, private, global network

- Extensive metro and long-haul fiber footprint for broad geographic coverage
- Traffic stays on Lumen-owned infrastructure, with private routing, segmentation, and encrypted transport
- Centralized network management and visibility with Lumen Connect

Lumen Multicloud Connectivity Services

Seamless connectivity for distributed workloads

[Lumen Multicloud Connectivity Services](#) deliver secure, high-performance private connectivity across cloud providers, data centers, enterprise sites and the edge. Built on Lumen's private network fabric, these services provide the predictability, security, and control enterprises need as multicloud becomes the operating model for digital, AI-driven business.

At the core of the portfolio is **Lumen Multi-Cloud Gateway**, a software-defined Layer-3 routing service that acts as a single control point across multiple cloud providers, data centers, and enterprise environments through one platform.

Together, these services replace one-off cloud connections and complex routing designs with consistent policy, visibility, and control—supporting cloud-to-cloud, site-to-cloud, and data center interconnect use cases. Backed by Lumen's extensive fiber footprint and digital platform, Multicloud Connectivity Services help organizations simplify operations, scale on demand, and reduce complexity and cost as bandwidth requirements grow from tens of gigabits to hundreds of gigabits and beyond.

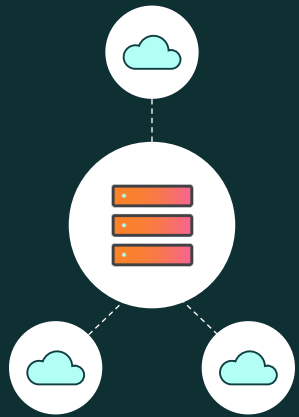


As enterprise workloads become increasingly distributed and performance-dependent, organizations are reassessing how they interconnect edge locations, data centers, and multicloud environments. Lumen's network fabric illustrates how programmable, software-driven networks can enable more predictable and consistent data movement across complex digital ecosystems."

- Peter Chahal

Director, Worldwide Telecommunications Research at IDC
Current Lumen customer compensated for their endorsement.





Multicloud Services Highlights

Simplified high-performance connectivity across clouds

- Eliminate one-off cloud connections with a single attachment to Lumen's private network that scales across clouds, data centers, and enterprise locations
- Intelligent routing across Lumen's private backbone avoids inefficient cloud hair-pinning
- Manage multicloud connectivity through a single control pane with consistent visibility and policy
- Traffic between environments stays on Lumen's SLA-backed private network, with built-in resiliency and path diversity for business-critical workloads

Built to adapt and evolve

- A programmable, fabric-based approach enables rapid connection activation and bandwidth scaling as demands change
- Private, automated access to cloud providers supports secure, high-performance cloud-to-cloud and site-to-cloud use cases
- Deep cloud adjacencies, extensive fiber reach, and high-capacity connectivity for hybrid, real-time, and AI-driven architectures
- Future-ready network foundation delivering 400G today and evolving toward 800G

Empower your business with Lumen Connectivity

Lumen Connectivity Services deliver agile, secure, and reliable networking to help your organization thrive in the digital and AI era, providing:

- **Seamless, high-performance connectivity:** Quickly and reliably connect locations, data centers, and clouds with up to 400Gbps bandwidth, a future-ready path to 800G, and access to 2,200+ third-party data centers to support AI growth.
- **Untangle multicloud environments:** Optimize complex environments for seamless integration, efficient data exchange, and real-time performance across public and private clouds.
- **Business continuity and resilience:** Enable real-time failover, automated backups, and resilient routing, backed by ~340,000 route miles of diverse fiber infrastructure.
- **Cloud-like experience:** Activate and manage services near real time through self-service portals and APIs, easily scaling bandwidth while improving efficiency and cost control.
- **Integrated, multi-layered security:** Protect data and applications with Black Lotus Labs® threat intelligence embedded in the Lumen backbone, combined with managed, multi-layered security for real-time detection, mitigation, and compliance.
- **Expert support:** Leverage managed and co-managed services with 24/7 monitoring for planning, implementation, uptime, and performance.

Future ready your network with a partner committed to your success.



Our partnership with Lumen will significantly drive advancements in live production solutions, content delivery and fan engagement. Lumen NaaS and other enterprise solutions [position us] to meet our technology objectives and support future growth.”

– **Michael Molinari**

Senior Vice President
PAC-12 Enterprises

