

LUMEN[®]

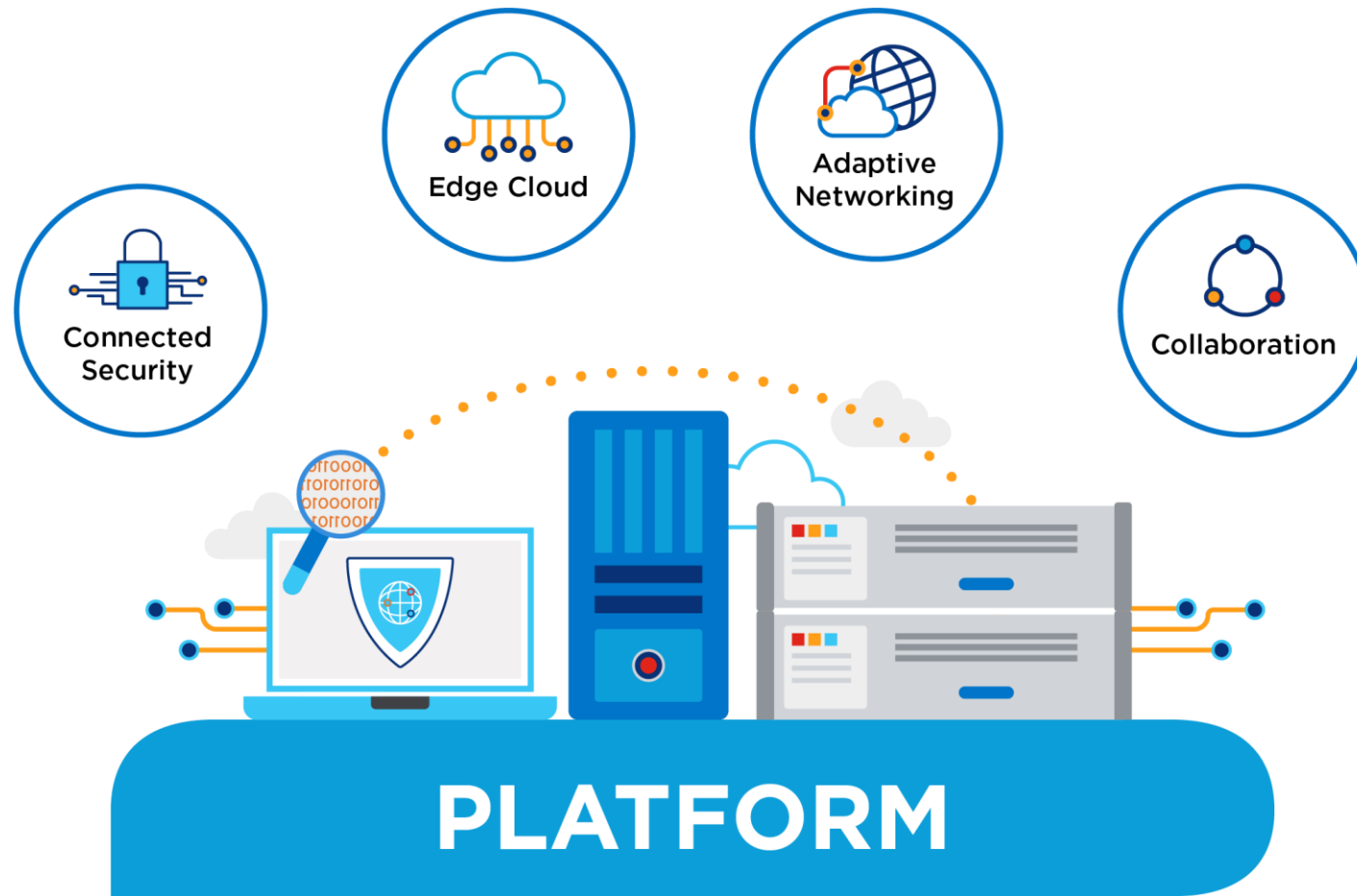
Lumen[®] SASE assessment

The power of intelligent networking and connected security

THE
PLATFORM
FOR AMAZING
THINGS

The Platform for Amazing Things

Managing for latency, performance, applications in a variety of environments



Legacy architectures have become outdated



Yesterday's dedicated WAN

- Centralized control of data, apps, traffic, devices, and users
- Secure perimeter with appliance and software
- VPN client access to private assets
- Hairpin access through data center to public cloud SaaS and services



Today's distributed reality

- Remote workers using unapproved devices and network access that avoids underperforming VPN
- Haphazard security protocols
- Shadow IT using unsupported cloud applications
- Workforce highly susceptible to malware, phishing, and botnet attack vectors

SASE is the convergence of networking and security

Organizations need a new set of security tools to protect their cloud-based infrastructure.



With the rise in cloud consumption, many enterprises have more users, devices, and data located outside of the traditional secured perimeter



SD-WAN services decrease the need to backhaul traffic optimizing the routing of applications to cloud resources



The same SD-WAN platforms can be used to more effectively connect cloud-delivered security resources



SASE supports the larger trend toward **consolidating technology tools and integrating them with cloud architectures.**

The network and security landscape is evolving



SASE is the convergence of network and security



The demand for SASE is soaring



Multiple interpretations around SASE's components



If you are considering SASE for your business, it is time to **design your SASE adoption journey**

The challenges of designing your SASE journey

Some elements to consider

Business **needs and policies**

Align desired SASE architecture with your business strategy

- Migration policies
- Security policies
- Industry
- Among others

The right **features** to achieve desired SASE state

Avoid redundancy and include only what your business needs

- Zero trust policies
- SD-Wan
- Firewall as a service
- CASB, among others

Identify the **provider** with the right offer

Consider product variations between vendors



among others

Data collection and analysis take around **600+ hours** from dedicated specialized resources

Incorrect SASE planning could result in

- Security vulnerabilities
- Course correction
- Non-covered gaps
- Delays in adoption

Mistakes to avoid:

- Generic migration approaches
- Inaccurate current state evaluations
- Incorrect vendor or element selection

\$4.24M

Global average total cost
of a data breach*

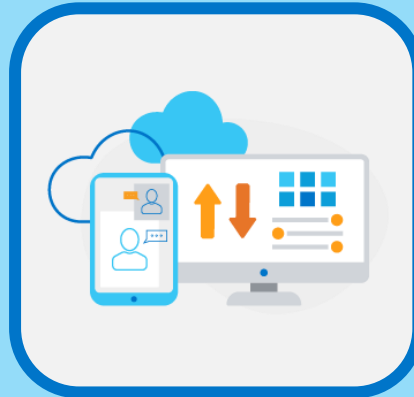


The first step is the most important

The **Lumen SASE Assessment** is designed to provide a clear adoption plan for a SASE solution that fits your business



Identify current gaps



Determine SASE elements that fit your strategy



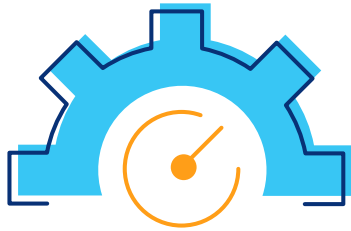
Follow the tailored roadmap for an efficient adoption

Accelerate

Leverage Lumen's experience for planning your SASE adoption journey help you avoid costly delays, unaddressed gaps, and course corrections

Why Lumen SASE Assessment?

Our security experts evaluate your current state and prepare a tailored adoption roadmap that fits your business needs



Accelerate your SASE journey

- **Identify and prioritize SASE gaps** in your business
- **Focused team** with resources working through an established process
- Avoid course corrections and **minimize costly mistakes that could delay the process**



Investment-conscious

- **Avoid investing in SASE elements** already present in your architecture or don't fit your needs
- Receive **high-level budgetary guidance** for each recommended roadmap option
- **Prevent security vulnerabilities** in the final SASE state



Leverage Lumen's expertise

- **Rely on Lumen** to prepare your SASE adoption plan removing the burden from your internal resources
- Our experts have **solid expertise and years of experience** in Networking and Security
- Our independent recommendations factor multiple vendors and are designed to **fit your specific needs**

Our **tailored roadmap** provides you with the **confidence and efficiency** to succeed in your SASE adoption



Key features

Identifies SASE components present in your current enterprise architecture

Analyzes your business strategies and migration plans related to network architecture

Examines your existing high-level network architecture

Performs a high-level review of your access policies, processes, and procedures

Provides recommendations for a SASE approach that suits your business strategy and industry characteristics

Develops a future state SASE roadmap, including high-level budgetary guidance for each recommended option

Lumen SASE Assessment engagement



High-level timeline

Weeks	Main activity
1-2	Data gathering
3-11	Assess the current SASE environment
	Assess network architecture and communications with users
	Align industry best practices and best-of-breed approaches
12	Finalize SASE assessment report
Every 2 weeks	Interim updates to customer

- Some activities could overlap
- Delays in data gathering could jeopardize the timeline
- Perform high-level Network Asset Inventory with Classifications
- Perform Final Assessment Analysis

Lumen SASE Assessment engagement



Report structure

Introduction

SASE framework and assessment methodology

SASE current state

Existing components under the SASE framework and high-level policy analysis

Future state
(recommendations)

Elements in desired SASE state: SD-WAN, CASB, FWaaS, Zero Trust

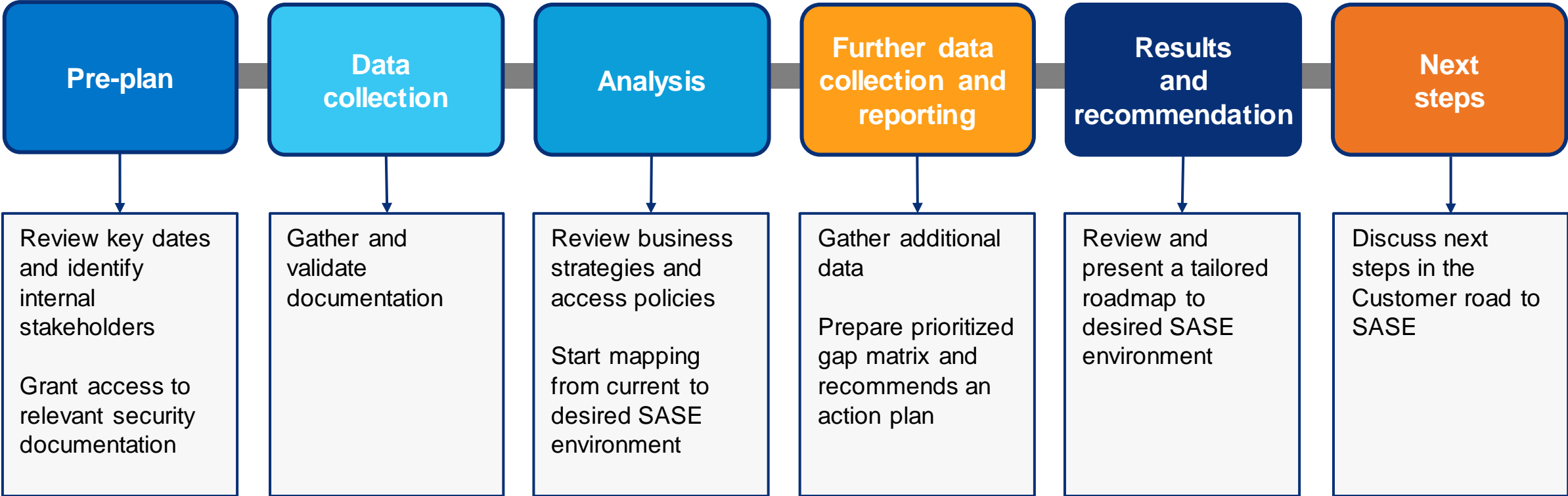
Migration Plan

Adoption action plan and tailored roadmap adjusted to business strategy and needs

Lumen SASE Assessment engagement



Methodology



Why Lumen?

Lumen SASE Assessment

- Our experts have solid expertise in network and security, elements that converge holistically in the SASE Framework
- Thanks to our independent approach, we recommend the right SASE elements* that fit your business strategy
- Lumen is widely recognized as a network leader with its extensive network and exceptional performance
- Deal with the same SASE experts during the entire engagement

*Multiple vendors may be considered in the final recommendation

Lumen[®] Connected Security blends technology and people to protect customers

Network and application protection

- SASE
- DDoS Mitigation Services
- Application Protection
- Perimeter security
- Managed Zero Trust Network Access

Threat intelligence, detection and response

- Managed detection and response
- Managed endpoint detection and response
- Incident response
- Rapid Threat Intelligence
- SOCaaS
- Managed SIEM
- Vulnerability Assessment

Security consulting

- Advisory services
- Workshops and planning
- Compliance and framework assessments
- Vulnerability management
- Security assessments

Tailored security solutions



About Lumen Security

At Lumen, we **see more to stop more** threats – **in real-time**. Our global network backbone provides vast visibility into the threat landscape to power our portfolio of security solutions.

Our portfolio provides the ingredients that **secure the Lumen platform**, applications and data **at the edge** and a **digital buying experience**.

We help organizations **simplify security** by embedding protection in network services and automating threat detection and response. We provide original **high-fidelity threat intelligence**, expert consulting and a robust professional services practice to empower today's defenders.