

# Lumen<sup>®</sup> Multi-Cloud Gateway Reference Architectures

Simplifying multi-cloud connectivity

# Multi-Cloud Gateway

Virtual L3 routing that unifies cloud, data center, and site connectivity—so you can deploy fast, simplify operations, and optimize performance

## Ideal for

Enterprises that:

- Operate in multiple clouds
- Host latency-sensitive or regulated workloads
- Seek to simplify multi-cloud networking

## Core Benefits

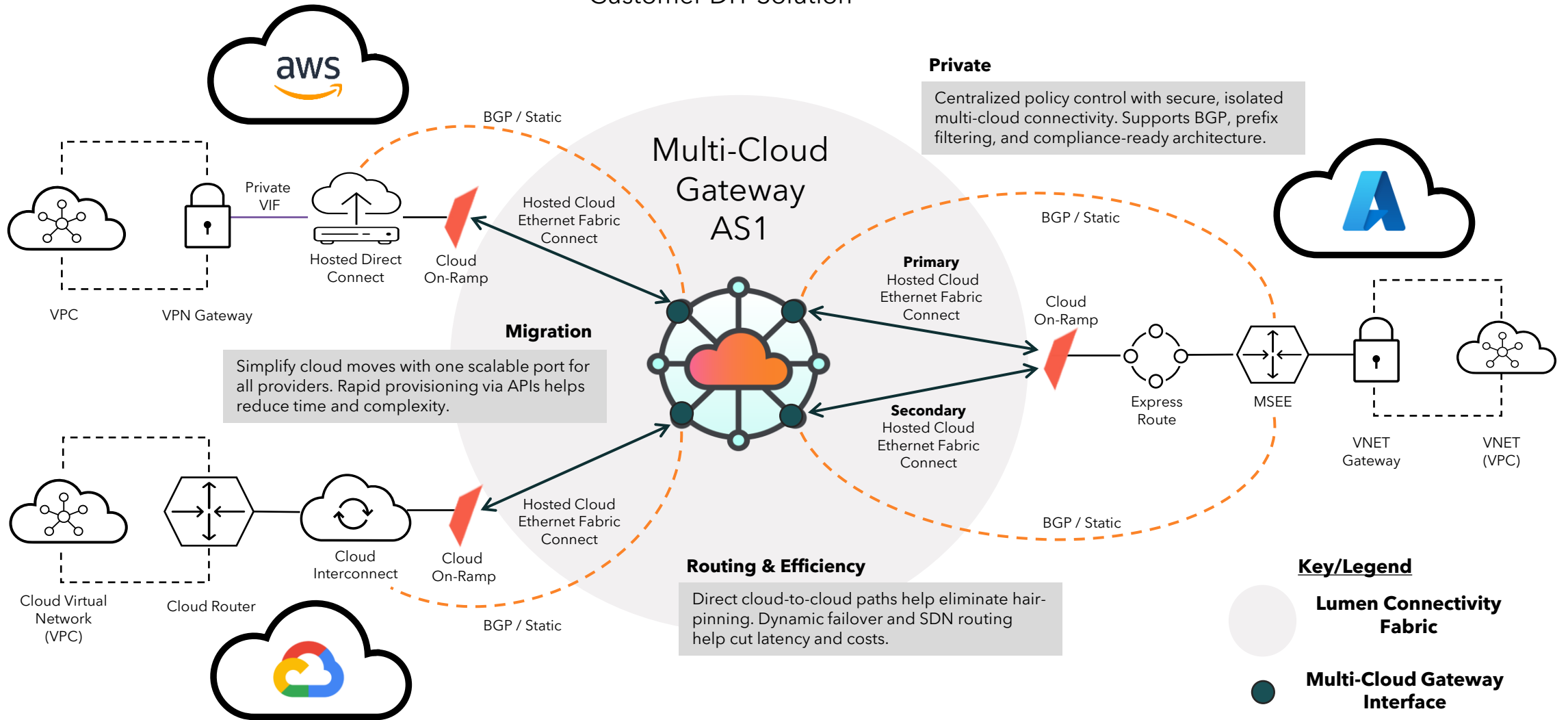
- Centralized policy control (BGP + prefix filtering)
- Designed to enhance performance by helping to eliminate hair pinning and reduce network costs
- Scale bandwidth with AI and workload needs

## Why Lumen?

- Runs on Lumen Fabric for private, SLA-backed connectivity
- Single-pane routing via Lumen Connect and APIs with centralized visibility
- On-demand, API-driven provisioning in minutes

# Multi-Cloud Gateway Cloud-to-Cloud

Customer DIY Solution



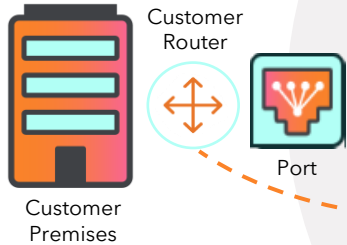
# Multi-Cloud Gateway Premises to Cloud



Customer DIY Solution

## Migration

Simplify cloud moves with one scalable port for all providers. Rapid provisioning via APIs helps reduce time and complexity.



VP2P Ethernet Fabric Connect

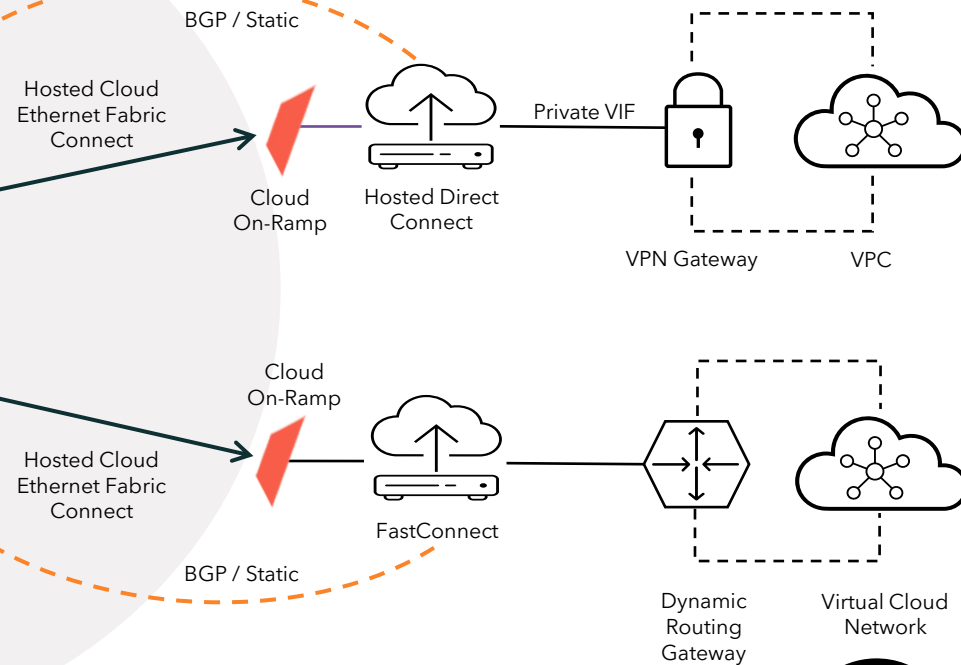
BGP / Static

## Multi-Cloud Gateway AS1



## Routing & Efficiency

Direct cloud-to-cloud paths help eliminate hair-pinning. Dynamic failover and SDN routing help cut latency and costs.



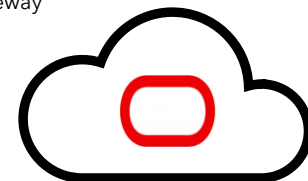
## Private

Centralized policy control with secure, isolated multi-cloud connectivity. Supports BGP, prefix filtering, and compliance-ready architecture.

## Key/Legend

 Lumen Connectivity Fabric

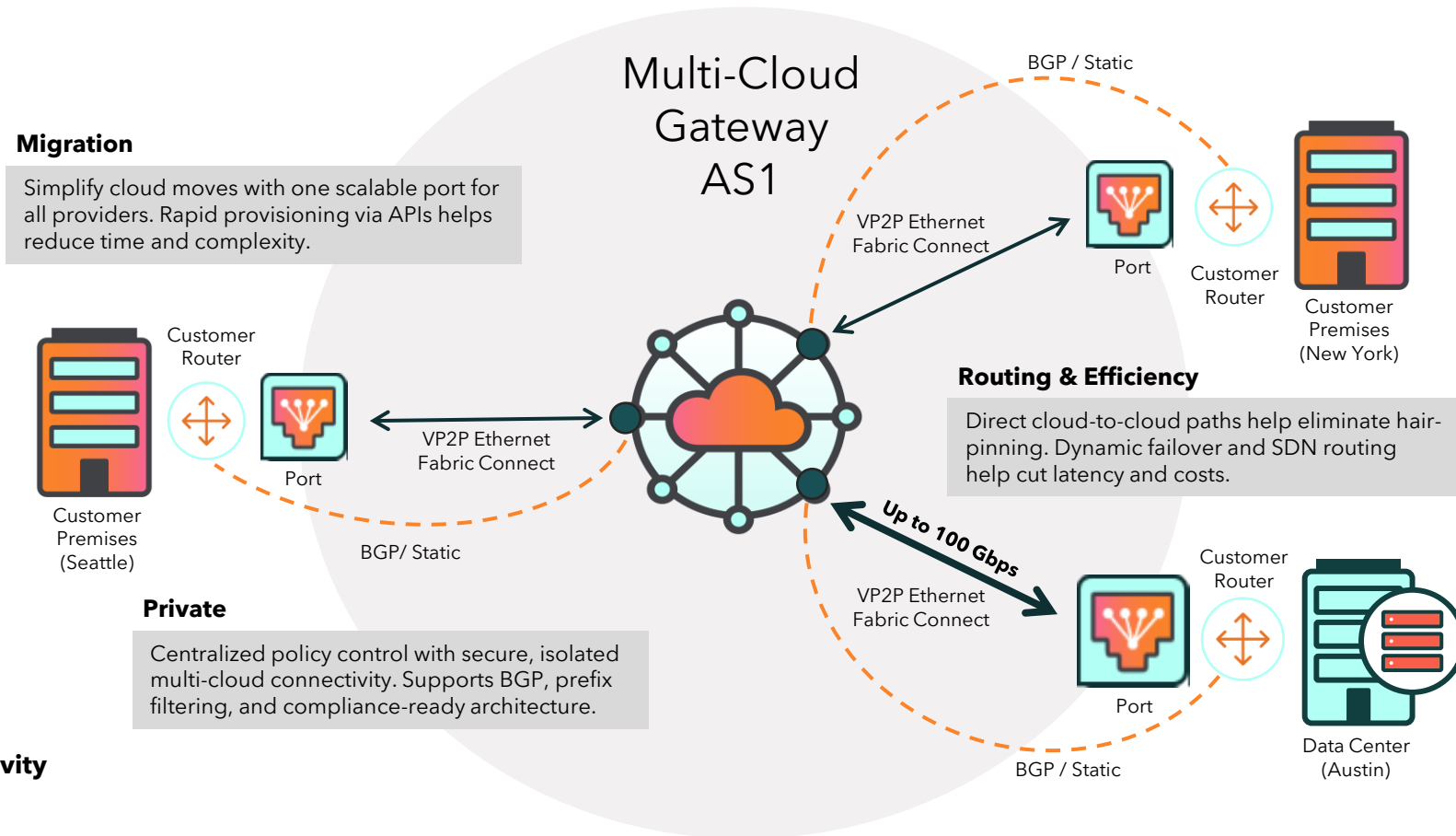
 Multi-Cloud Gateway Interface



# Multi-Cloud Gateway Premises to Data Center



Customer DIY Solution



**Key/Legend**

**Lumen Connectivity Fabric**

**Multi-Cloud Gateway Interface**

# Multi-Cloud Gateway Premises/Data Center to Cloud

