

Lumen® Connectivity Services

Reliable and flexible networking solutions for future-ready businesses

Modern businesses rely on digital capabilities to serve their customers, employees and operations across every corner of the organization. As your company's ambitions evolve to incorporate big data, AI, cloud applications and other emerging technologies, your network's ability to adapt and excel becomes increasingly essential for the success of your business.

Boost performance, not complexity

Connect your digital ecosystem with simple, powerful networking solutions – even across various cloud and on-prem locations – so you can accelerate growth and productivity at a competitive pace

Strengthen reliability for your operations

Fortifying your network with built-in cybersecurity and redundancy provides comprehensive security and visibility across your digital ecosystem, enabling your team to build with confidence while protecting you from costly interruptions and compliance issues

Control costs with transparent pricing

Step into the driver's seat of your network with a robust menu of services and pricing models, an online portal that empowers you with cost and usage transparency and the ability to manage some services on-demand



“We had close to 100 locations with unique circuits and carriers. Now we have a centralized ability to manage all of our [networking] through Lumen, which has really taken a load off me and my team... We’re not just keeping the lights on—we’re creating value. And Lumen is the backbone that makes it all possible.”

– **Doug Saunders**

Chief Information Officer, Arctic Glacier

Common use cases

- Cost-effective connectivity for point-to-point, multi-cloud and hybrid cloud connectivity
- Fortify business continuity with secure, redundant connectivity that helps meet compliance standards
- Bandwidth expansion on-demand to help seamlessly manage network usage increases from AI and spikes from seasonality and data back-ups

Features and Specs

On-demand services

Flexible, scalable internet and network services with options for pay-as-you-go pricing models and self-service adjustability. Solutions include:

- **Internet On-Demand** to rapidly deploy dedicated internet connectivity across locations
- **IP VPN On-Demand** for multi-site and cloud connectivity with dynamic WAN access
- **Ethernet On-Demand** to connect point-to-point locations and clouds with private bandwidth of up to 400 Gbps

Internet services

Connect multiple locations with reliable and secure internet services. Solutions include:

- **Dedicated Internet Access** for high-speed, symmetrical internet that is reserved for your company
- **High Speed IP** for high-bandwidth IP transit up to 400 Gbps
- **Lumen® Dedicated Internet Extension** unlocks global internet coverage through a single provider

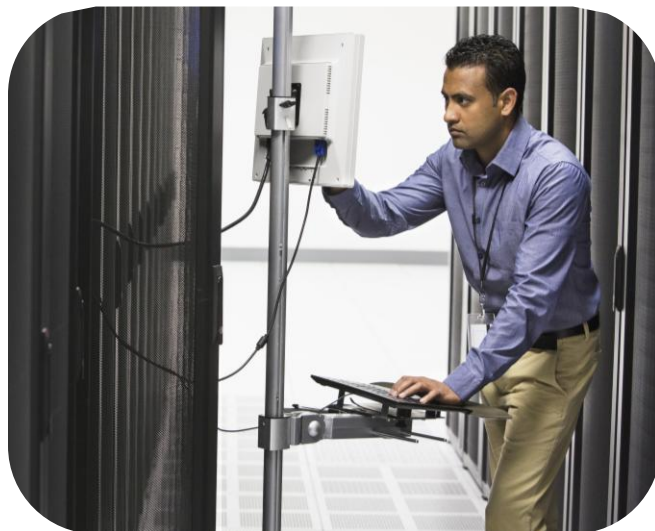
Lumen® IP VPN

Hybrid connectivity across private networks, public clouds and the internet.

Lumen® Ethernet services

Connectivity from data centers to clouds over a private MPLS backbone up to 400 Gbps. Solutions include:

- **E-Line** for linking either single or multiple locations to a single site
- **E-Lan** for multipoint-to-multipoint connectivity, allowing all locations to connect seamlessly



The Lumen network offers up to **400 Gbps** transport, **100+ cloud on-ramps** and **2,200+ third-party data centers**.

Why Lumen?

Lumen delivers secure, high-performance connectivity built on one of the world's most expansive and deeply peered networks. With 30+ years of experience, we simplify complex networking challenges to help connect people, data, and applications across clouds, data centers and locations. Our continued investment in AI-ready infrastructure and metro expansion helps ensure your business is future-ready.

866-352-0291 | lumen.com | info@lumen.com

Services not available everywhere. Business customers only. Lumen may change, cancel or substitute products and services, or vary them by service area at its sole discretion without notice. ©2025 Lumen Technologies. All Rights Reserved.

LUMEN
TECHNOLOGIES