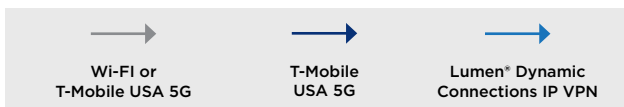
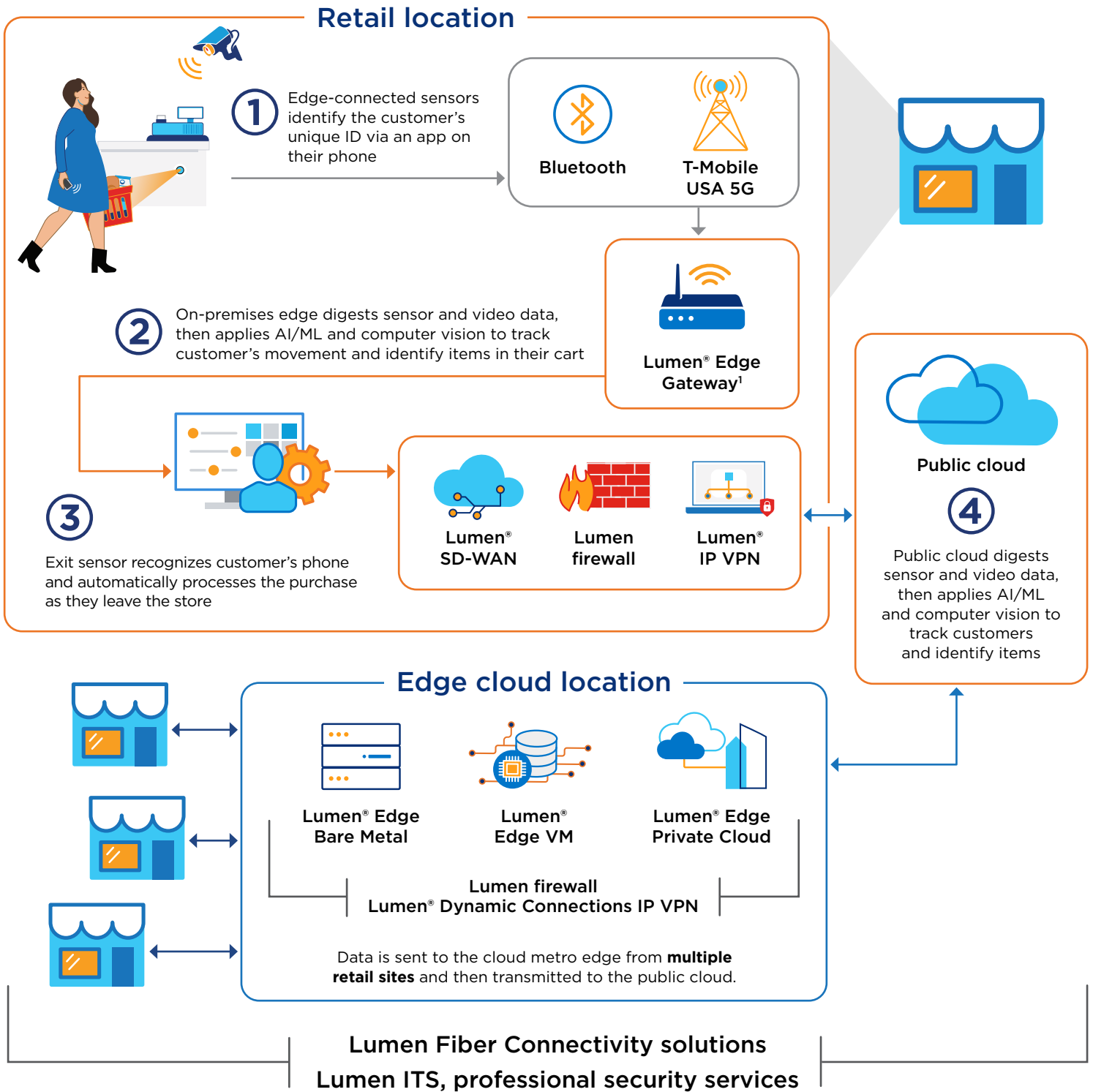


# Edge-enabled contactless checkout



EXPLORE EDGE SOLUTIONS

[www.lumen.com/edge](http://www.lumen.com/edge)

<sup>1</sup>For high compute use-cases, use Lumen Edge Gateway with Lumen Private Cloud

# Lumen Edge Solutions

## Services

### Lumen IT Services

Accelerate your innovations with next-generation IT solutions and trusted expertise.

[www.lumen.com/en-us/managed-it-services/strategy-systems-and-technology.html](http://www.lumen.com/en-us/managed-it-services/strategy-systems-and-technology.html)

### Lumen® Professional Security Services

Minimize threat management overload and shrink attack surfaces while maximizing defense alertness.

[www.lumen.com/en-us/security/professional-security-services.html](http://www.lumen.com/en-us/security/professional-security-services.html)

## PaaS

### Lumen® Edge Orchestrator

Organize and monitor your infrastructure, workloads and services across multi-edge environments.

[www.lumen.com/en-us/edge-computing/orchestrator.html](http://www.lumen.com/en-us/edge-computing/orchestrator.html)

## IaaS

### Lumen® Edge Gateway

Take advantage of an on-premises edge computing solution for WAN, security and IT workloads.

[www.lumen.com/en-us/edge-computing/edge-gateway.html](http://www.lumen.com/en-us/edge-computing/edge-gateway.html)

### Lumen® Edge Bare Metal

Optimize app performance with dedicated bare metal servers on edge nodes designed to deliver  $\leq 5$ ms of latency.

[www.lumen.com/en-us/edge-computing/bare-metal.html](http://www.lumen.com/en-us/edge-computing/bare-metal.html)

### Lumen® Edge VM

Provision virtual machines and functions with next-gen agility at the edge.

[www.lumen.com/en-us/edge-computing/vm.html](http://www.lumen.com/en-us/edge-computing/vm.html)

### Lumen® Edge Private Cloud

Harness fully managed pre-built infrastructure for high-performance computing on our global fiber network.

[www.lumen.com/en-us/hybrid-it-cloud/private-cloud.html](http://www.lumen.com/en-us/hybrid-it-cloud/private-cloud.html)

## Edge end points

### Lumen® Edge Gateway

Take advantage of an on-premises edge computing solution for WAN, security and IT workloads.

[www.lumen.com/en-us/edge-computing/edge-gateway.html](http://www.lumen.com/en-us/edge-computing/edge-gateway.html)

## Connectivity

### Lumen® Fiber+ Internet

Leverage enterprise network reliability and scalability delivered through a self-serve digital buying experience.

[www.lumen.com/en-us/networking/business-fiber.html](http://www.lumen.com/en-us/networking/business-fiber.html)

### Lumen® SD-WAN

Secure and coordinate workloads on a single, automated platform with centralized visibility and control.

[www.lumen.com/en-us/networking/sd-wan.html](http://www.lumen.com/en-us/networking/sd-wan.html)

### Lumen® Dynamic Connections

Stay ahead of evolving business demands with real-time network provisioning for next-gen IT agility.

[www.lumen.com/en-us/hybrid-it-cloud/dynamic-connections.html](http://www.lumen.com/en-us/hybrid-it-cloud/dynamic-connections.html)

## Security

### Lumen® Managed Firewall Service

Secure and defend your infrastructure by protecting the network perimeter from external threats.

[www.lumen.com/en-us/security/managed-firewalls.html](http://www.lumen.com/en-us/security/managed-firewalls.html)

### Lumen® IP VPN

Connect your locations globally to a flexible network with the capacity and self-service features to respond fast.

[www.lumen.com/en-us/networking/mpls-ipvpn.html](http://www.lumen.com/en-us/networking/mpls-ipvpn.html)