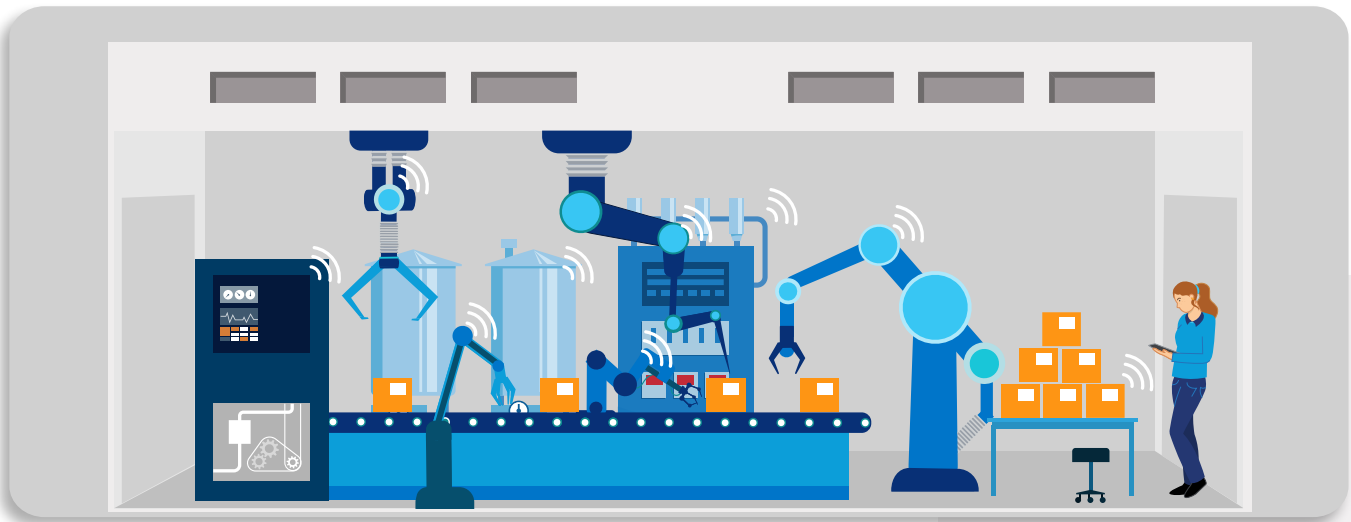


Edge-enabled condition-based monitoring

Leveraging edge computing, industry leaders are using real-time monitoring to preempt potential equipment failures and costly downtime. Uninterrupted data feed streaming from remote sensors facilitates the rapid intervention needed to fix equipment faults—fast.



How condition-based monitoring works

- 1 Sensors (e.g., temperature, pressure, vibration) on equipment continuously stream measurement samples
- 2 Sensor data is analyzed in real time for anomalous conditions that could lead to equipment failures
- 3 Equipment status is continuously updated and notifies appropriate maintenance staff immediately of conditions requiring interventions
- 4 Data is periodically transmitted to the public cloud and used for continuous learning of AI/ML models

Potential benefits

Reducing unplanned downtime by

▶ **75-90%¹**

Improving percentage of orders fulfilled by

▶ **60-80%¹**

EXPLORE EDGE SOLUTIONS

¹McKinsey manufacturing expert interviews, January 2022

www.lumen.com/edge