

# Lumen<sup>®</sup> Edge VM

Provision virtual machines and functions fast at the edge.

Designed to better manage IoT devices, sensors and systems at the edge where digital interactions occur for more sophisticated data processing and intelligence, Edge VM combines software-defined compute, storage and secure networking with the resources needed for next-gen applications to run at high-performance, ultra-low latency and at scale.

You can deploy workloads at the edge and help reduce bandwidth costs, solve latency issues, enable data sovereignty and improve governance across a varied and dispersed geography.

## Extend your cloud to the edge

Expand and scale software-defined benefits of the cloud to universally enable remote provisioning, management and monitoring of edge devices across large geographical footprints.

## Simplify management of devices

Unify orchestration and visibility of devices with a flexible virtualized software stack that offers seamless integration for any variation or incongruence in the underlying hardware.

## Secure and optimize operations

Enhance security and cost-effective operations with the Lumen Platform, which is designed to support data privacy and increase efficiency using SDDC technology and virtualization tools.

**60+ planned edge locations designed to deliver 5ms or better latency.**



## Common Use Cases

- Virtualizing point-of-sale (POS) systems that require seamless integration to peripherals
- Unifying and connecting IoT devices with virtualized software stacks in a single edge ecosystem
- Running SaaS applications close to digital interactions and operating as a VM on a server

## Features and Specs

### Scale

- On-demand virtual machine (VM) creation, reading, updating and deletion
- Control Logical Grouping of virtual infrastructure assigning VMs to group or folder
- 60+ planned edge locations in North America, EMEA and APAC

### Management

- Multiple configurations of operating systems, memory and partitions:
  - OS: Ubuntu 18 & 20 or CentOS 7 & 8.3
  - Memory capacity: 4GB – 256GB
  - vCPUs: 1 – 32
  - Partition: 1G – 500G

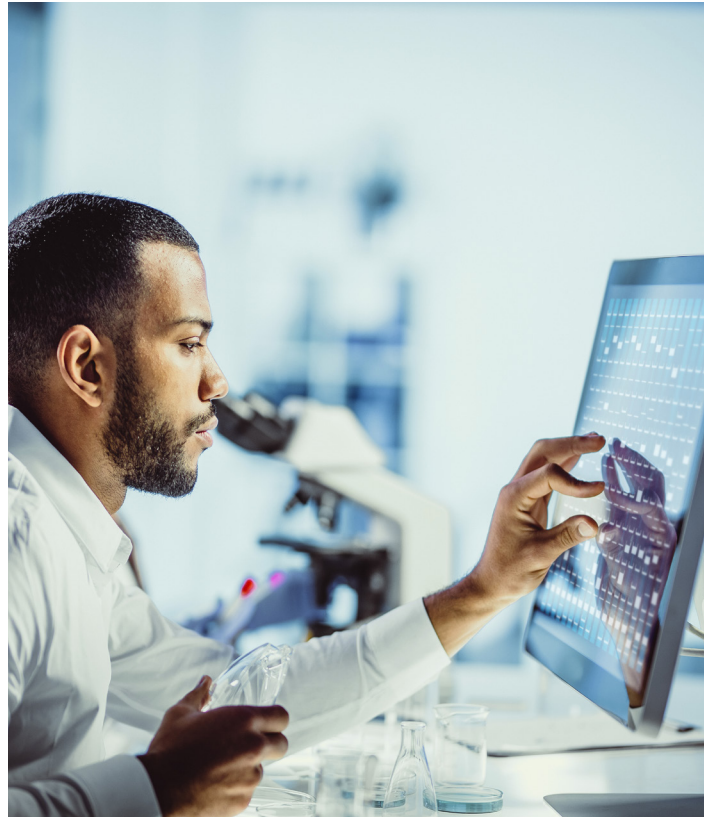
### Security

- Dynamic networking choices
- Authorization and authentication of services and users

## Availability

Lumen Edge VM is available in North America, EMEA and APAC at over 60+ planned edge locations.

[See availability](#)



## Why Lumen?

With flexible app delivery options on the largest, ultra-low-loss network in North America with approximately 3.5 million miles of fiber, Lumen Edge VM enables you to smoothly and efficiently run next-gen apps at the metro edge.