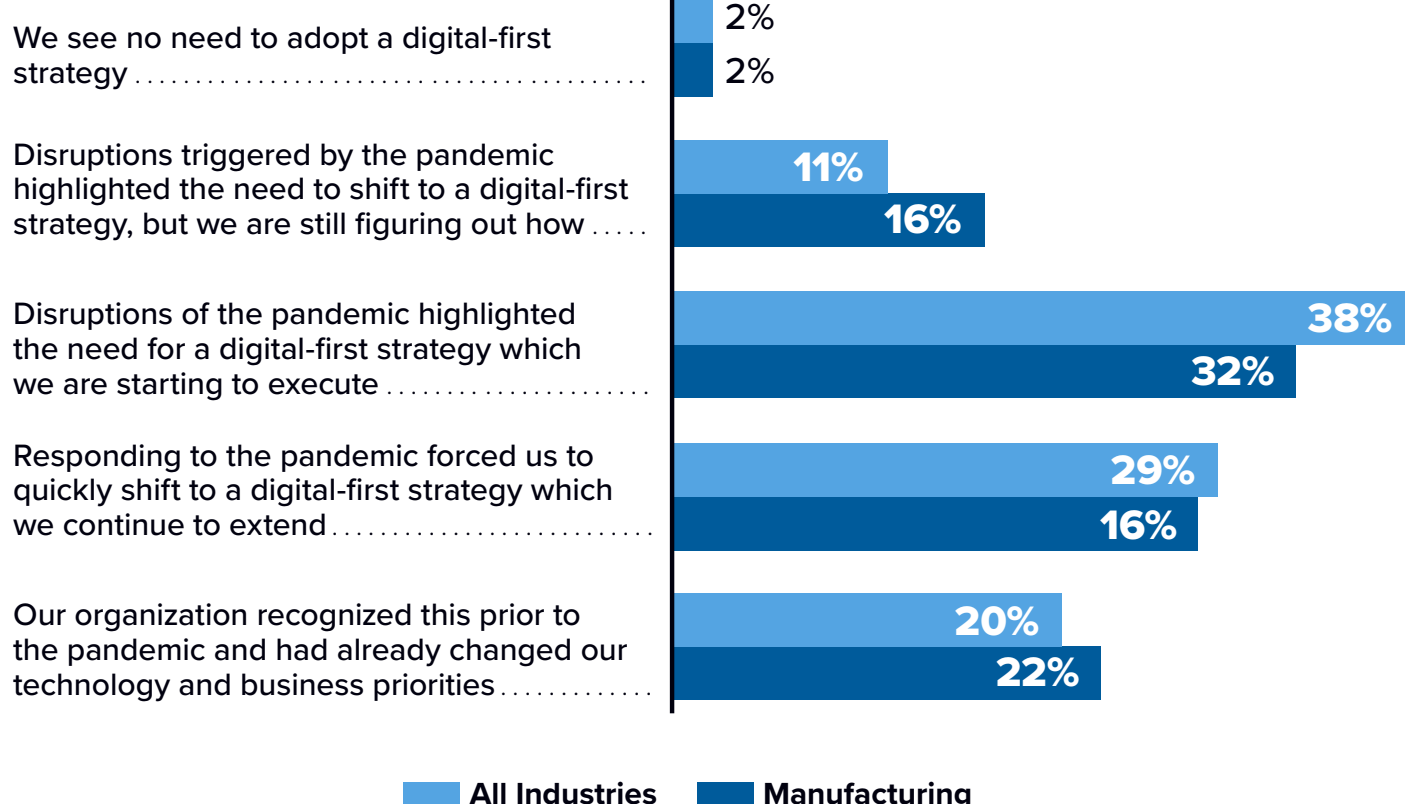


The Importance of Adaptable Manufacturing Operations

Manufacturers need trusted connectivity and data-driven decision making to serve as the foundation for adaptable and efficient operations.

Becoming a Connected, Adaptable Enterprise

Less than one-quarter of manufacturers had a digital-first strategy prior to COVID-19.

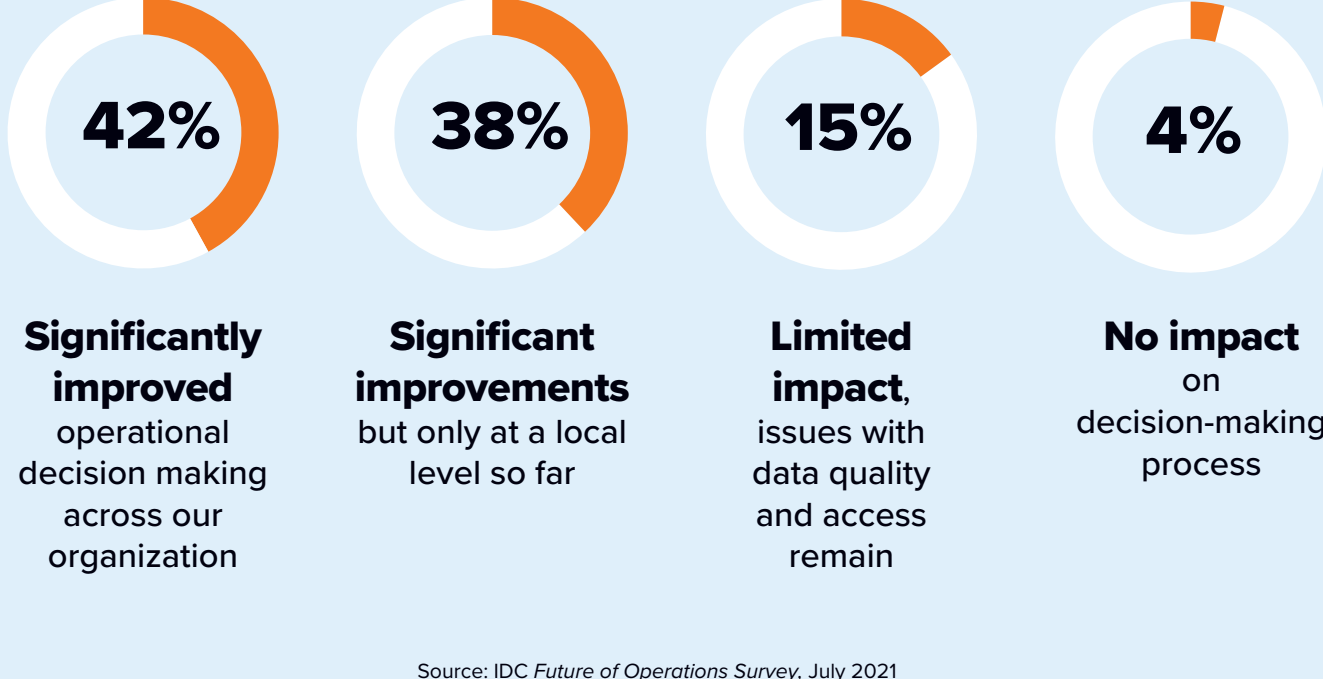


Source: IDC Future Enterprise Resiliency & Spending Survey, September 2021

Importance of Data for Effective Decision Making



Manufacturers identified the impact of more and/or better access to data on operational decision making:



Source: IDC Future of Operations Survey, July 2021

Challenges to Enabling Remote Operations

Manufacturers lack trusted connectivity to enable remote monitoring/diagnostics of operations.



Source: IDC Future of Operations Survey, July 2021

Wireless-first Connectivity Is a Critical Enabler



Manufacturers realize the importance of wireless-first connectivity to serve as the foundation for resilient operations:



Source: IDC Future of Operations Survey, July 2021

Connectivity and Insight Generation Are Investment Priorities

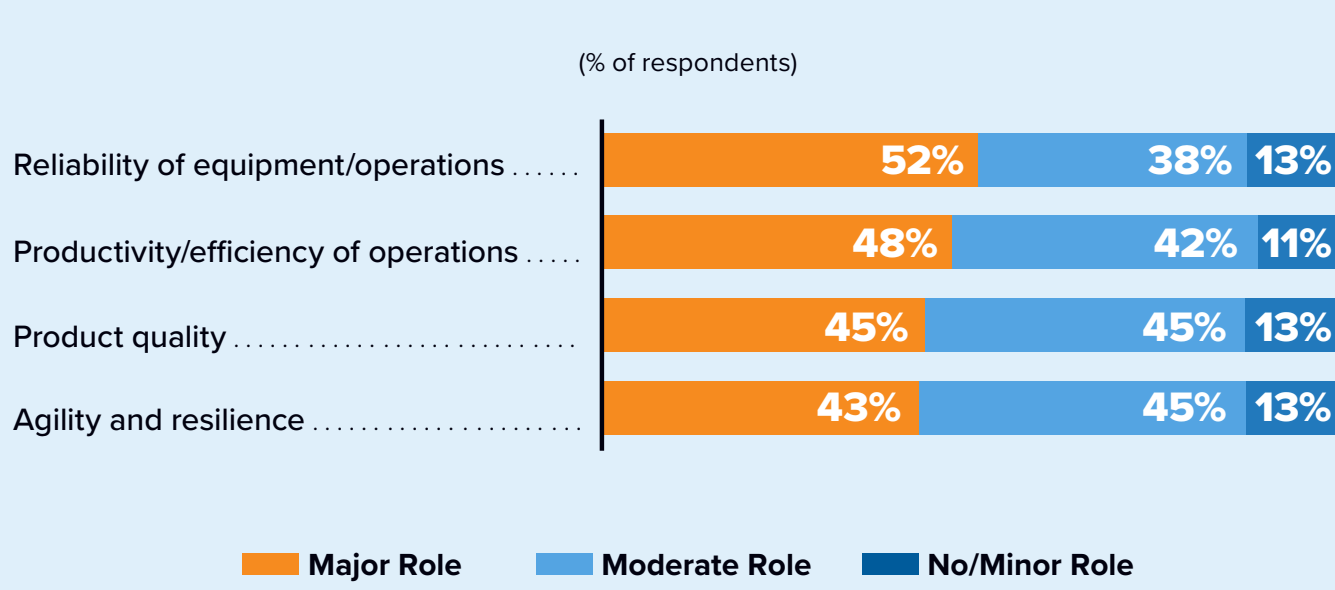
Manufacturers ranked the following investments as priorities to enable adaptable, remote operations:



Source: IDC Future of Operations Survey, July 2021

Digitize to Deliver Adaptive Operations

Digital technology has a clear role in enabling manufacturing success.



Source: IDC Future of Operations Survey, July 2021

Message from the Sponsor

Lumen is a leader in the manufacturing space serving companies across the globe. We provide technology, edge, and security solutions to enable connected factories and an agile supply chain.

Learn more about how Lumen provides innovative solutions for the manufacturing industry.