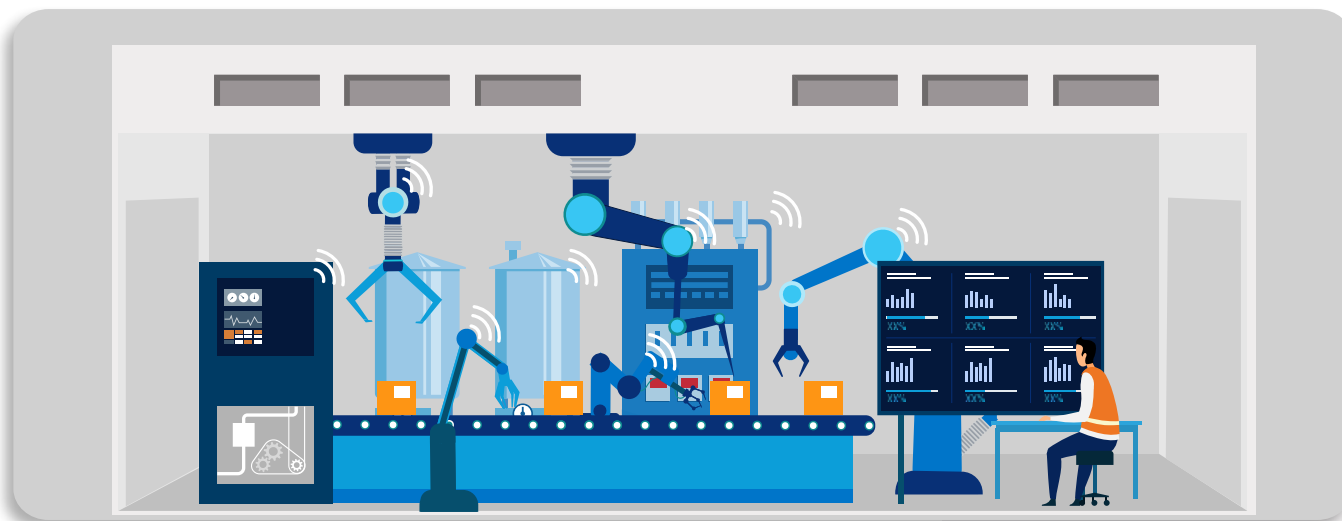


Edge-enabled **predictive maintenance**

Leading manufacturers leverage AI/ML in combination with edge computing and sensors to support predictive maintenance workflows—preempting potential equipment failures and avoiding costly downtime.



How predictive maintenance works

- 1 Plant equipment such as motors and pumps with external or OEM sensors installed (e.g., heat, vibration) transmit data to on-premises edge solution
- 2 On-premises edge collects, normalises and analyses data from connected assets
- 3 Factory employees are sent an updated maintenance schedule optimised to prevent machine failures
- 4 Plant equipment data is periodically sent to the public cloud to improve predictive ML models and analytics

Potential benefits

Saving on equipment repair costs up to

▶ **10-30%**¹

Reducing MRO parts kept in inventory by up to

▶ **10%**¹

EXPLORE EDGE SOLUTIONS

www.lumen.com/edge

¹McKinsey manufacturing expert interviews, January 2022