

Lumen DefenderSM powered by Black Lotus Labs[®]

See clearly, proactively defend, operate simply

Through proactive and intelligent threat management, your defenses stay ahead with Lumen Defender. Powered by threat intelligence from Black Lotus Labs, Lumen Defender adds a new layer of protection by automatically blocking all traffic from known internet-based threats before they can breach your internal network. With no new hardware or manual configuration required, Lumen Defender provides robust and hands-free proactive network protection.

Unmatched network visibility

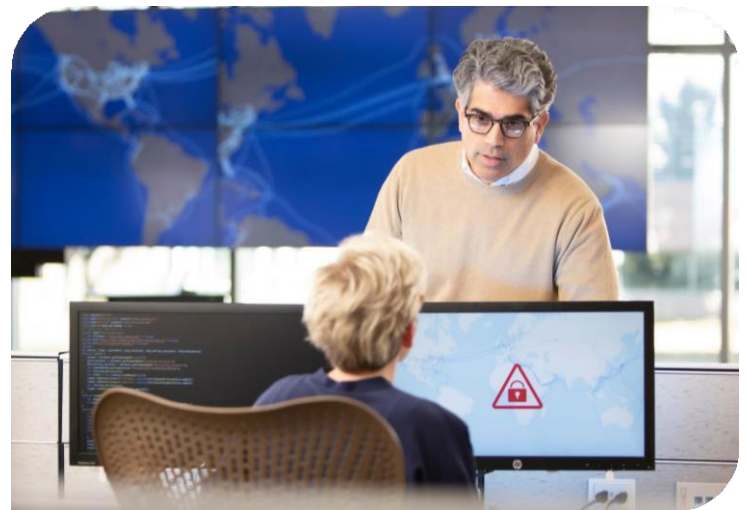
Lumen Defender is powered by threat intelligence from Black Lotus Labs who leverage their direct access to the massive Lumen internet backbone to identify and track the hosts and infrastructure being used by malicious actors.

Customized experience

The Lumen Control Center portal offers customers a clear view of threats targeting their network and allows them to customize which threats are blocked based on severity or individual IP addresses. Users can also look up specific IP addresses for detailed investigation.

Reducing cyber attacks

Lumen Defender enhances network security by integrating with the Lumen[®] Internet On-Demand (IoD) and Dedicated Internet Access (DIA) networks, adding a defense layer that blocks threats at the edge. This integration helps reduce business disruptions, elevating network protection and user experience.



“An offering like Lumen Defender shifts the security posture of their customers into a shift-left proactive posture and helps to reduce the potential notices and damage of cyber-attacks that are seen today.”

– Craig Robinson, IDC

Common use cases

- **Enhanced data security** with an affordable cybersecurity platform for existing devices and applications by proactively blocking at the networks edge.
- **Simplicity of use** allows companies to protect their legacy systems without the need for extensive patching, providing comprehensive threat visibility and management.
- **Maintain business continuity** by preventing breaches that could disrupt operations, while adhering to industry regulations.

Features and Specs

Proactive defense

- Lumen Defender uses threat intelligence powered by Black Lotus Labs to identify risky hosts and block traffic from them before it can breach a customer's network

Tailored and customizable

The Lumen Defender Control Center Dashboard is powerful and easy-to-use:

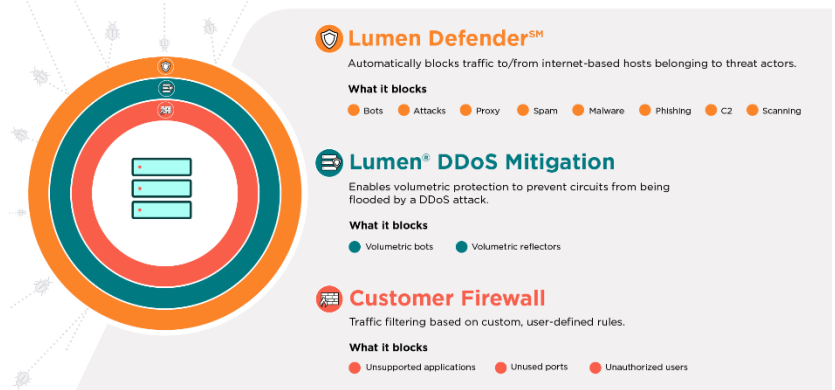
- Allows users to customize and configure multiple features and settings
 - Active threats, Advanced Reporting, and Blocking
- Customers can look up any IP address to view its risk score and any associated threat categories using the IP Address lookup feature
- Custom allow/deny/monitor lists

Automated threat response

- Automatic blocking of malicious inbound IP traffic
- Reporting of all blocked and unblocked threats
- Email & text alerts (by severity of % increase)

Deliver wholistic internet protection

Lumen cybersecurity solutions are built to take the pressure off your existing firewall and better protect your data and apps.



Lumen Defender: enhancing security with DDoS and Firewalls

This diagram illustrates how Lumen Defender shields your network from threats, orchestrating a multi-layered defense strategy.

Why Lumen?

In today's digital landscape, where threats evolve rapidly, Lumen Defender stands out as a beacon of proactive protection. Powered by the unmatched network visibility of Black Lotus Labs, Lumen Defender is not just a service - it's a strategic defense mechanism tailored to safeguard your business against the unknown.

For more information contact your Channel Manager or visit lumen.com