

Lumen® Specialty Lines

Safeguard critical health and safety systems with a single-service and fully managed failover solution.



38% of companies have experienced an increase in monthly phone (POTS/PSTN) charges.¹

38%

POTS Modernization Challenges

Plain Old Telephone Service (POTS) modernization isn't a matter of if, but when. Proactive planning is paramount as businesses face these challenges:

Future Readiness

A cloud-based solution with multiple 5G provider backup gives businesses a system that stays current with the latest technology with no ongoing equipment maintenance or replacement.

Lack of scalability

POTS lines are individually updated and managed, with limited upgrade and enhancement capabilities as businesses grow.

Fragmented systems

Depending on location restrictions, one company may require multiple POTS providers, resulting in disparate and inconsistent platforms, price points, invoicing, monitoring and support.

Reliability and resilience

While POTS lines have historically been reliable, the century-old technology is aging, and companies cannot afford for their alarms and safety systems to fail. A robust, reliable solution with included failover is essential.

Limited IT resources

Monitoring critical systems is essential, but as POTS lines age and require more maintenance and attention, IT teams are stretched thin focusing on other priorities.

Price and availability

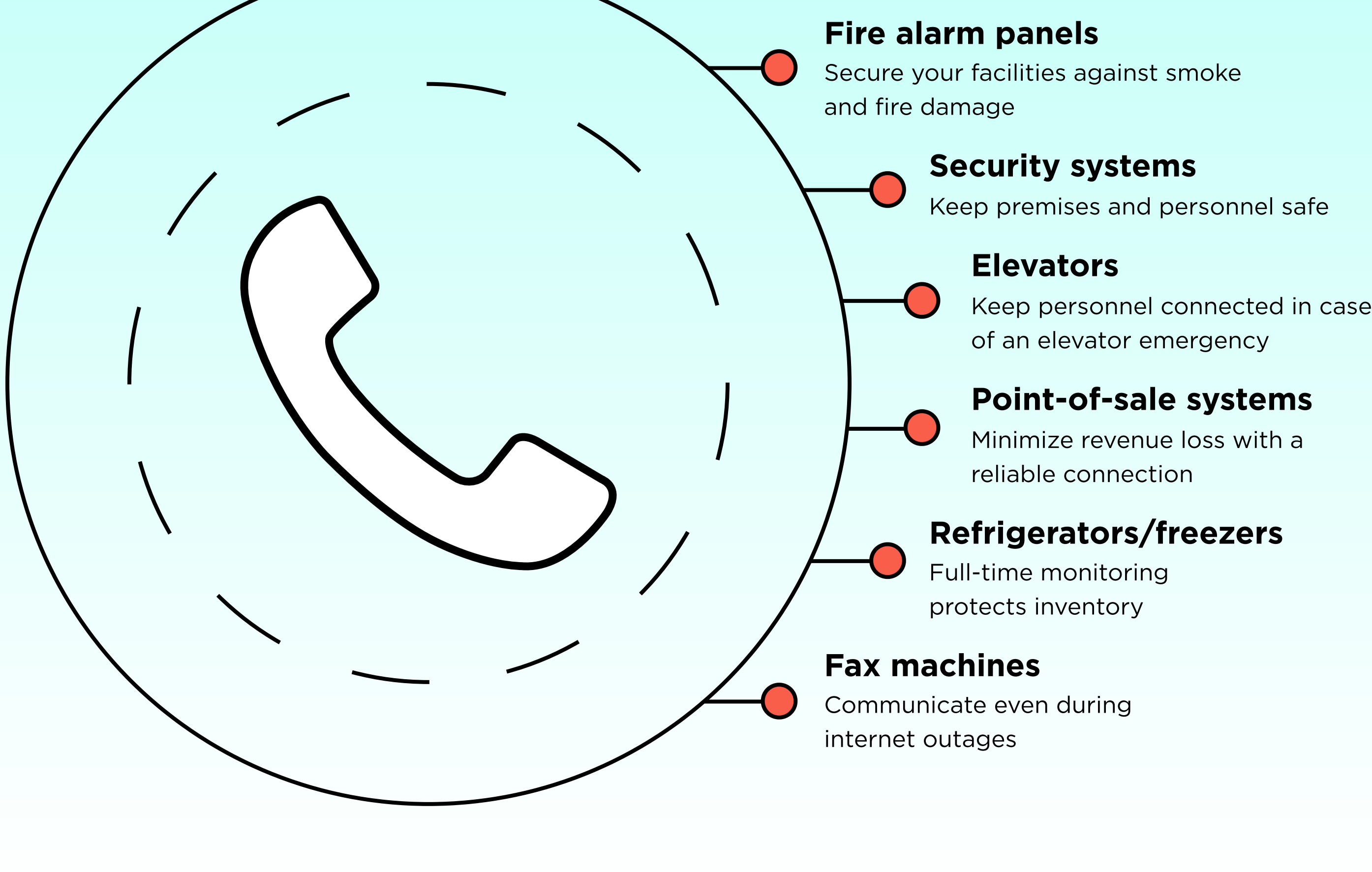
Carriers are raising prices and decommissioning copper wires in response to the FCC order that deregulated POTS lines. Maintenance costs continue to spike as this aging infrastructure reaches end of life.

55%

55% of companies have migrated **less than half** of their legacy POTS/PSTN lines.¹

Functional POTS Uses

Most digital alternatives to POTS lines don't provide connectivity for functional services such as:



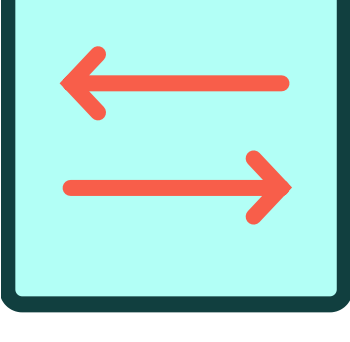
Migrating to Lumen Specialty Lines for your legacy systems and devices could save you ~59% per year.*

~59%

*Savings are based on a company with 10 locations with 8 specialty lines per location and a 5-year term compared with POTS lines priced at \$60/line per month.

Lumen makes migration easy

Now, there's a secure, affordable cloud-based solution for your functional lines, and migration is a breeze. [Lumen Specialty Lines](#) offers a wide range of business benefits:

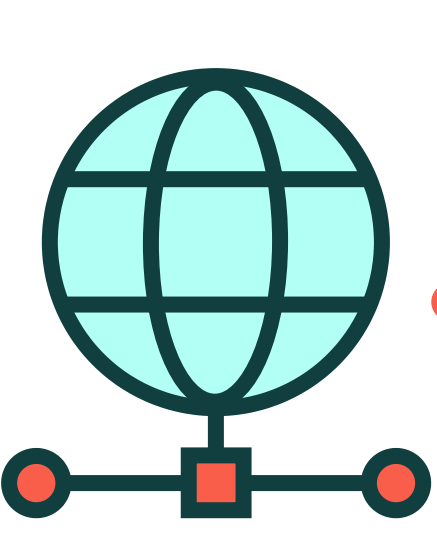
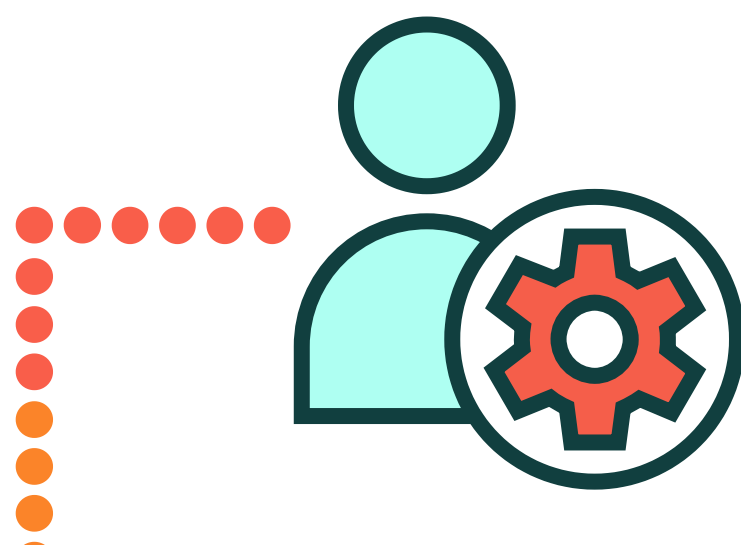


Ease of use

This **fully managed and monitored digital solution** includes a **white-glove migration experience**, freeing up resources so you can focus on your business.

Affordability

Your **predictable monthly service rate** includes installation and site survey as well as all hardware, software, service and support.

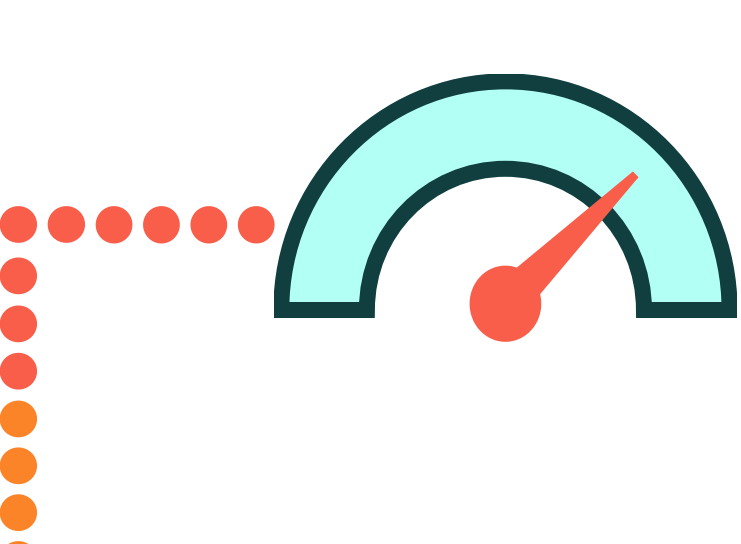


Simplified billing

No territory restrictions. We can serve all your U.S. sites using new or existing network services.

Business continuity

LTE failover and backup connectivity keep your lines up 24/7 and help ensure that your critical systems are functioning properly.



Scalability and efficiency

Add sites easily over time, and enjoy unified, reliable alerts and alarm reporting from a single vendor.

Cloud voice

This solution provides **high-quality calls between team members and customers** across mobile, broadband or internet-based connectivity.



Act now and see how Lumen can help you see savings while we deliver a cloud-based system for your mission-critical devices.

CONTACT LUMEN

¹IDC, How Midmarket Organizations Can Overcome Legacy Voice System Challenges, November 2023.