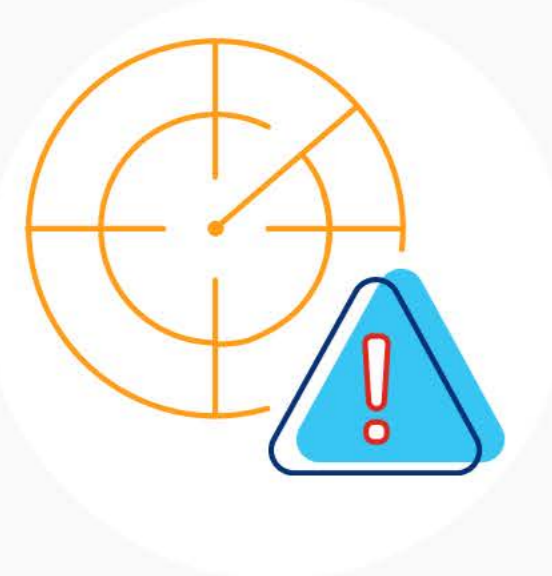


## Q1 attack trends



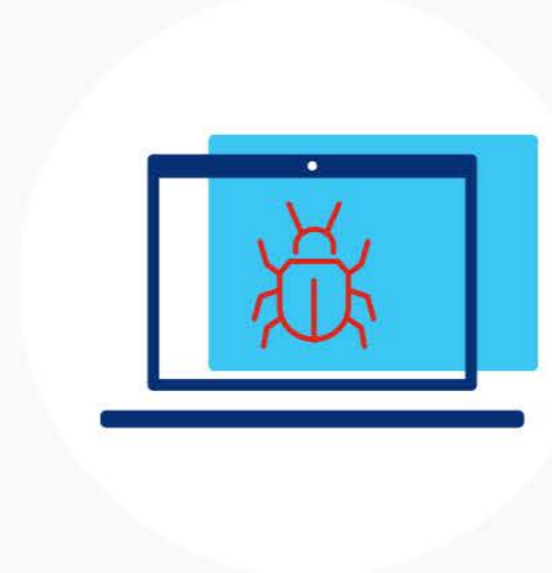
**Sophisticated attack methods are on the rise** such as the use of DNS water torture attacks



**A new year brings new multi-vector combinations**, using 5 and 6 attack vectors — the most we have ever seen



**“Hit-and-run”-style attacks remain popular** with victims targeted multiple times to cause long-term chaos



**Beware of bots** as applications and APIs continue to face immense pressure from malicious ones

## Attack sizes skyrocketed in Q1



The largest attack size Lumen scrubbed in Q1 was **817 Gbps**

↑104% from last quarter



The average packet rate-based attack Lumen scrubbed in Q1 was **354 Kpps**

↑13% from last quarter

## Q1 DDoS attack stats



Lumen mitigated **8,653** DDoS attacks

↓6% from last quarter

**99** attacks/day

**70%**

of DDoS attack-period durations were

**<10** minutes

↑3% from last quarter



Multi-vector attacks represented

**44%**

of all DDoS attacks  
↑11% from last quarter

## Top 5 verticals targeted in the 1,000 largest attacks



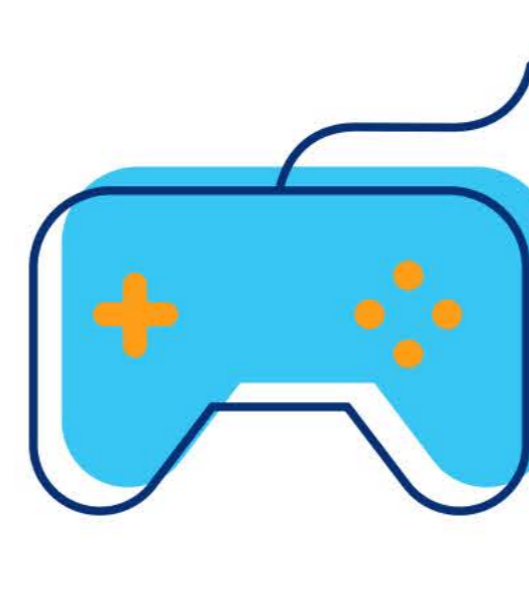
Telecom

85%



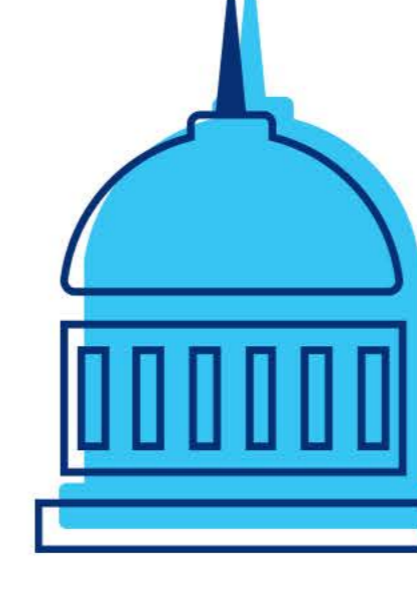
Other

4%



Gaming

3%



Government

3%



Software & Technology

1%

## Q1 application protection stats

**42%** of requests were blocked in real time

**30%** of blocked requests came from bots

The top three verticals with the highest percentage of blocked traffic were



Banking

5.7%



Advertising

5.4%



Telecom

2.8%

See how DDoS and application threats evolved in Q1. Read the full report from Lumen.

[READ THE FULL REPORT NOW](#)