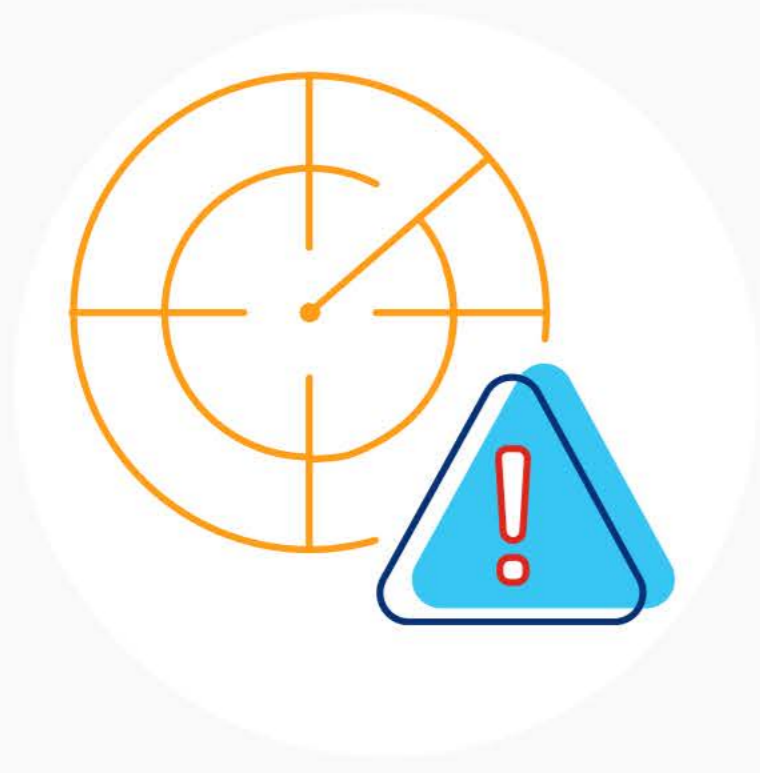


Q4 emerging attack trends



Attackers are trying to fly under the radar by using essential services and expected forms of traffic



Holidays are still prime targets for adversaries looking to take advantage of understaffed IT and security teams



“Hit-and-run”-style attacks are evolving with the same victims targeted multiple times to cause long-term chaos

Small, probing attacks are prevalent, driving down average attack sizes



The average attack size Lumen scrubbed in Q4

1.3 Gbps

↓7% from last quarter

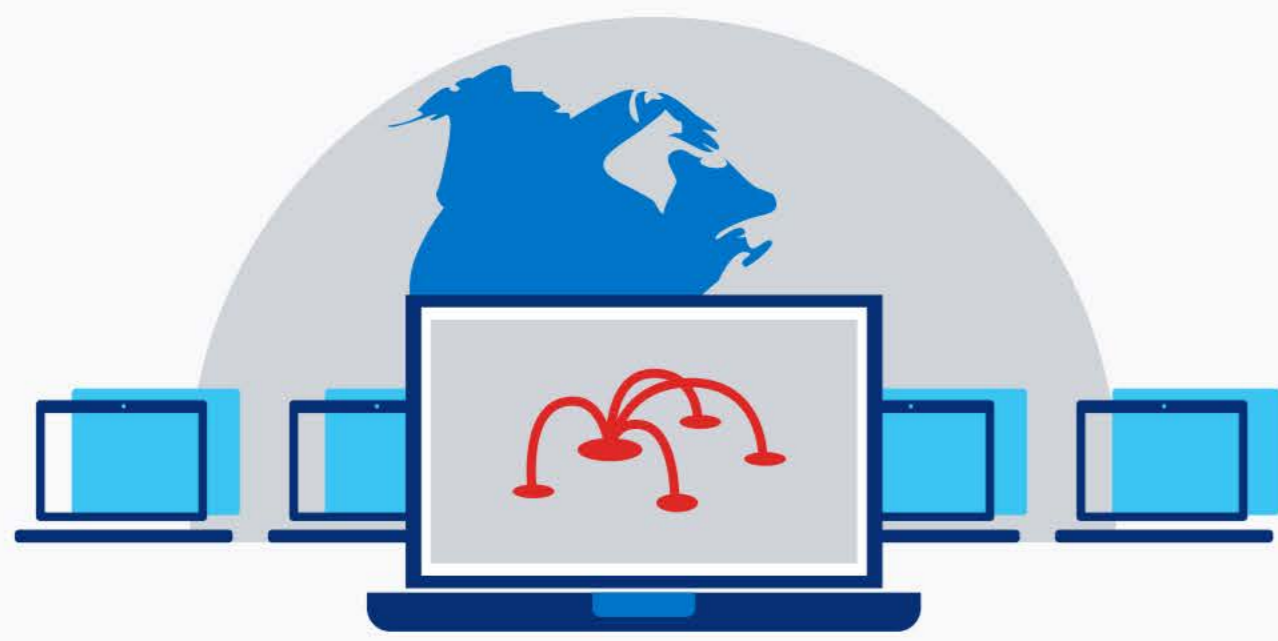


The average packet rate-based attack Lumen scrubbed in Q4

312 Kpps

↓28% from last quarter

Q4 2022 DDoS attack stats



Lumen mitigated

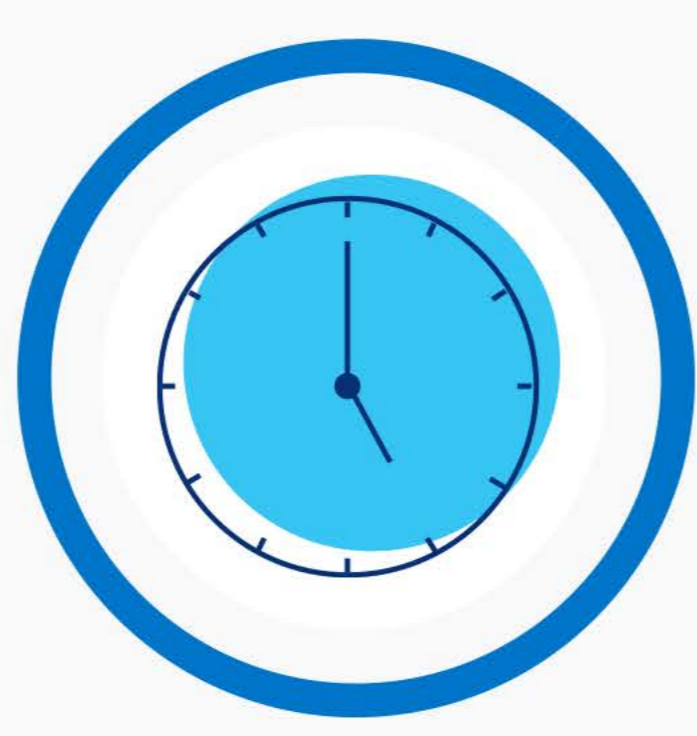
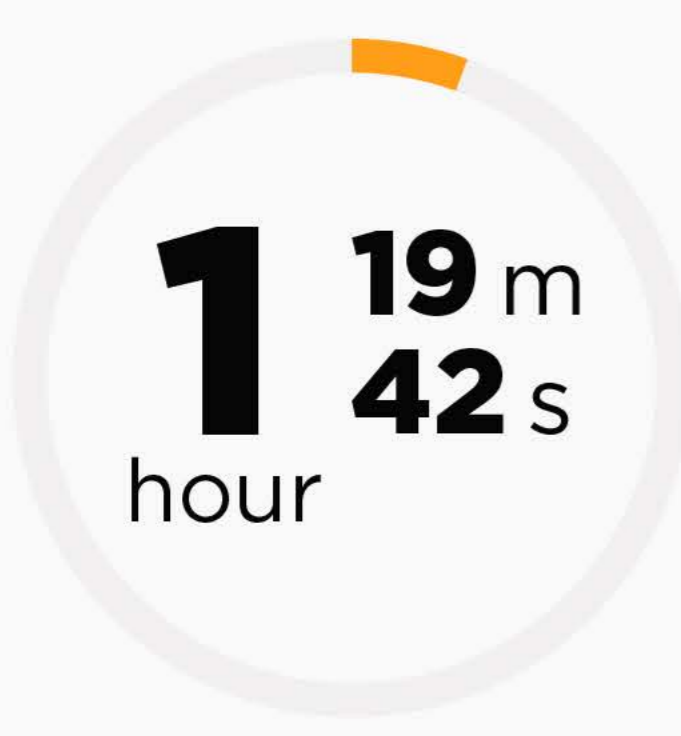
9,195

DDoS attacks

↑66% compared to Q3

103 attacks/day

Average DDoS attack period Lumen mitigated

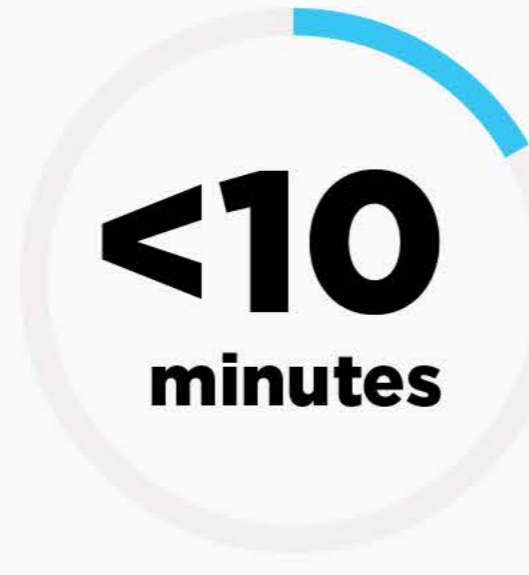


Longest DDoS attack period Lumen mitigated



68%

of DDoS attack-period durations were



↑15% from last quarter



Single-vector attacks represented

61%

of all DDoS attacks

↑2% from last quarter

Top 5 verticals targeted in the 1,000 largest attacks



Telecom

87%



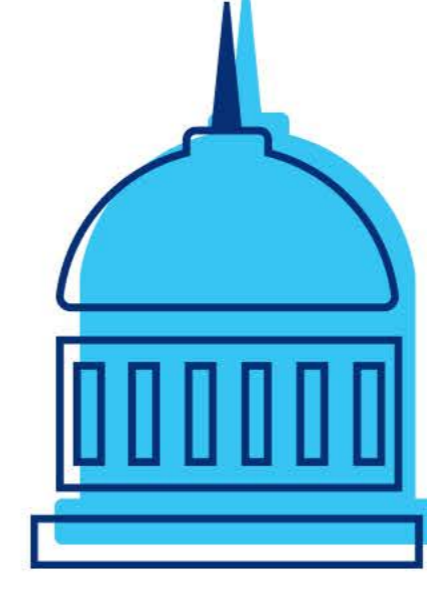
Software & Technology

4%



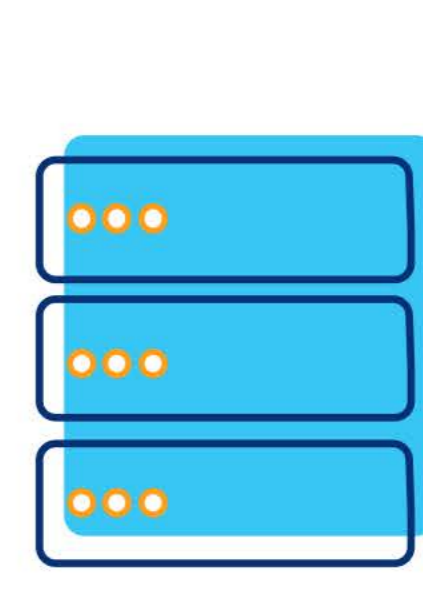
Gaming

3%



Government

2%



Hosting

1.3%

See how DDoS threats evolved in Q4. Read the full report from Lumen.

[READ THE FULL REPORT NOW](#)