

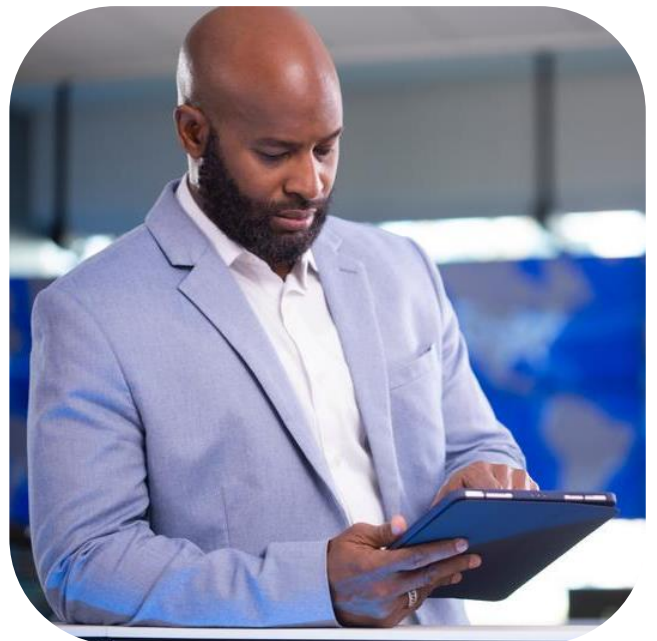
Secure experiences encourage innovation and trust

Large organizations face many challenges in protecting their confidential data, digital assets, and applications in today's complex environment. With a shortage of skilled talent and bad actors developing more sophisticated and frequent attacks, it is critical for organizations to partner with experts to achieve the security posture necessary for their business growth.

Lumen places security at the core of its capabilities and provides solutions that integrate with your infrastructure to protect your data and applications, helping you deliver an outstanding customer experience.

How could security incidents prevent you from achieving your goals?

- Non-secure environments compromise collaboration and discourage innovation, jeopardizing productivity and business growth.
- Overtaxed IT staff may lead to overlooked vulnerabilities, delayed response to threats, and overall decreased efficiency.
- Downtime could disrupt business operations and harm the experience of your customers.
- Non-compliance can result in fines, loss of customer trust, and damage to the company's reputation.
- Uninformed employees can inadvertently cause security breaches, leading to data loss or system compromise.



Security solutions to enable your business priorities

With its holistic approach to security and a team of experts, Lumen can help large organizations like yours secure their apps and valuable data so you can focus on innovation.

Partner with Lumen to:



Provide business continuity and enhance operation resilience anywhere within your perimeter to enable system availability to customers and employees.



Make compliance easy by finding gaps and making plans for your organization, so you can concentrate on your business objectives.



Get flexible solutions tailored to your business and help enable control and secure access to data and applications anywhere in your network.



Allow your team to focus on strategic work by leveraging Black Lotus Labs threat intelligence to stop threats before they reach your network or fabric.



Help enhance productivity and build a security culture in your organization by safeguarding collaboration applications and educating your teams on identifying and responding to attacks.

Why Lumen?

Lumen is your single provider to enable digital transformation. With a comprehensive portfolio and experienced talent, we can help safeguard your customer experience, protect your confidential data, and manage threats. Backed by the extensive and deeply peered Lumen global network, Black Lotus Labs' threat intelligence, and our skilled and experienced team of security experts, Lumen is a trusted partner to help improve your security posture.

Contact us and start optimizing your business today [Learn more](#)

866-352-0291 | lumen.com | info@lumen.com

LUMEN[®]
TECHNOLOGIES