

Security for a Digital-First Society

Safeguard mission critical data and operations to better serve communities

Residents, students, and employees expect seamless digital interactions with public service entities. Public service entities must evolve their technology to offer seamless digital experiences, catering to the community's demand for convenience and collaboration. However, integrating new tools into legacy systems poses security risks and may result in disjointed digital experiences.

Lumen is here to help protect your whole of state or city ecosystem from potential attacks; safeguarding your user data and critical systems while seamlessly integrating technologies that enable you to create the best experiences for your communities. Our advisors help you assess your environment and develop tailored action plans to respond to threats and optimize your tools and applications for efficiency and cost.

What security barriers are preventing you from better serving your community?

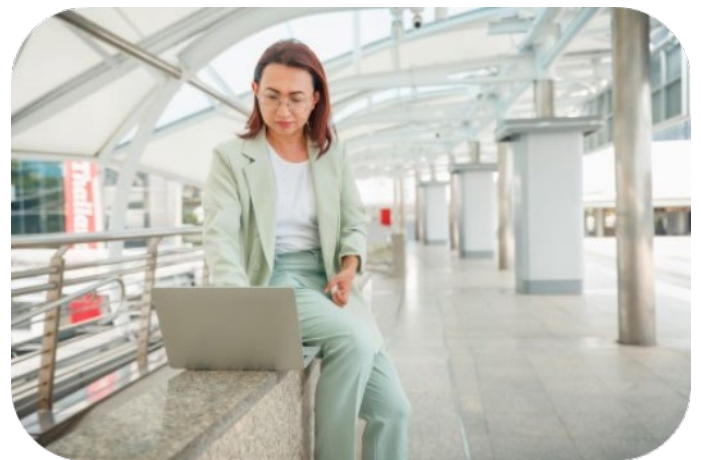
Many agencies serving the public are hindered by outdated infrastructures that struggle with operational efficiency and managing high user traffic, which increases vulnerability to attacks. However, budget and resource limitations often preclude a full infrastructure overhaul.

State and local entities are under federal pressure to update security practices like Zero Trust. Despite many agencies progressing towards Zero Trust, only 1% view themselves as experts,¹ highlighting the complexity of prioritizing strategic security measures.

Given the sensitive data shared and stored daily, educational and government institutions are prime cyber-attack targets. Strengthening security is crucial to safeguard residents, students, and staff from bad actors.

Common use cases

- Secure cloud-based applications help optimize performance of your infrastructure for efficient collaboration and compelling, engaging experiences.
- Adaptable security practices allow agencies and institutions to flexibly adopt frameworks that best secure their environments and data.
- A converged solution with security at every stage strengthens protection of critical services and user data from attackers.



“According to our Q4 2023 DDoS Report, **government** was the top targeted vertical, **receiving 66%** of the 1,000 **largest attacks** Lumen mitigated.”¹

– Lumen

Lumen Quarterly DDoS & Application Threat Report Q4 2023¹

Trust Lumen to help you safeguard your future

Navigating the security landscape is no easy task. Lumen can help you implement solutions to maximize your resources and help improve your security posture. Our team of consultants provide hands on support to handle the heavy lifting of threat management, risk mitigation, and compliance regulations so you can focus on the future of your communities.

The Lumen proactive approach to security

- Serving a technology-forward society means providing solutions that support virtual collaboration and efficient digital experiences.

Safeguard critical data

- It's important to uphold strong data security policies to safeguard residents, students, and staff. Continuous monitoring helps identify and address threats early, preventing data breaches. Educating users on security protocols like multi-factor authentication, Zero Trust, and avoiding phishing attacks enables everyone to contribute to our collective security.

Implement holistic protection with a converged solution

- Working to modernize networks by integrating new, digital experience-driven technologies into legacy systems can enhance virtual collaboration and resident experiences.

Meet compliance demands

- Navigate the regulatory landscape with ease, enabling compliance standards to be met and maintained efficiently. Adaptable security practices allow agencies and institutions to flexibly adopt frameworks that best secure their environments and data.



Why Lumen?

As a trusted partner to State and Local Governments and Educational Institutions, Lumen can help secure your critical data, protecting all of your users, including residents, students, and staff. IDC has recognized Lumen as a major player in their MarketScape 2024 U.S. National Government Professional Security Services vendor assessment and recommends federal agencies strongly consider Lumen for network security modernization, full SASE implementation, SOC modernization and incident response services.² The Lumen network is one of the largest, deeply peered backbones in the world offering unique insights into emerging cyber threats, enabling effective network security. Adhering to standards like NSTAC, ISO, and CMMI enables daily security diligence and compliance support, focusing on comprehensive community protection.

² [IDC MarketScape: U.S. National Government Professional Security Services 2024 Vendor Assessment](#)

866-352-0291 | lumen.com | info@lumen.com

866-352-0291 | lumen.com | info@lumen.com

Services not available everywhere. Lumen may change, cancel or substitute products and services, or vary them by service area at its sole discretion without notice. ©2024 Lumen Technologies. All Rights Reserved.

LUMEN[®]
TECHNOLOGIES