

# Lumen® SD-WAN Solutions

Automated security, optimized performance and intelligent scalability for driving digital innovation.

Lumen managed and co-managed SD-WAN solutions help reduce the complexity and business risk of network transformation on a single, automated platform that coordinates the full spectrum of connectivity types. Our tools, technology and hands-on expertise provide the ability to design, deploy and evolve with business needs while maintaining complete visibility, security and control.

## Benefits

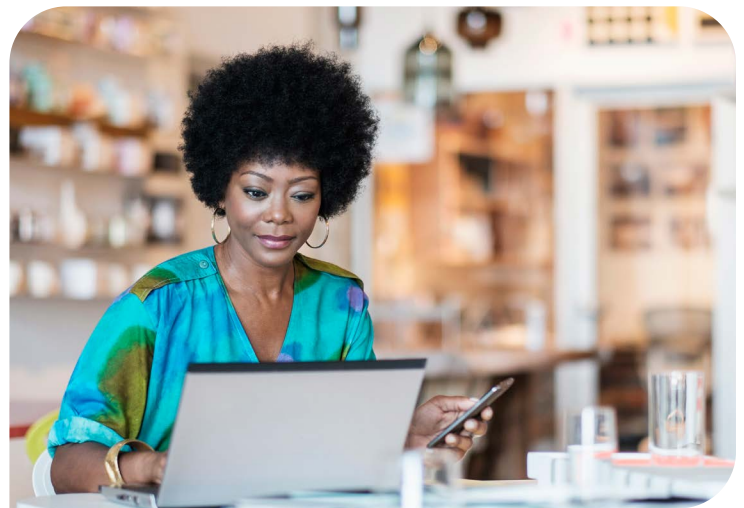
**Accelerated network agility** - Manage and make changes to routing and user policies, traffic thresholds, and security controls in near real time across your entire network.

**Operational efficiency** - Managed services supplement in-house resources with highly skilled experts to help design, configure, deploy and manage your network, freeing up valuable IT resources for other projects.

**Maximized app performance** - Prioritize essential apps, dynamically route traffic, automatically mitigate performance issues and deploy app-aware failover to help ensure continuous access to critical cloud-based resources.

**Enhanced resiliency** - Make your hybrid network failsafe by deploying active/active connectivity that's balanced under normal conditions and automatically reroutes if one connection goes down.

**Automated network intelligence** - Enable automatic routing by user group, application, traffic thresholds or site location to deliver latency-minimized, prioritized traffic management for critical and sensitive traffic.



“Lumen enhances customer value by building its hybrid networking capabilities, such as MPLS, dedicated internet, broadband, and wireless access around its managed SD-WAN services”

— Roopashree Honnachari  
Senior Industry Analyst, Frost & Sullivan

## Frequent use cases

### Software-defined branch management

Bring multiple branch, campus, retail, data center, colocation and cloud locations under a single network umbrella with uniform policies and security protocols.

### WAN optimization

Seamlessly integrate public and private transport and intelligently route traffic to effectively utilize bandwidth while eliminating bottlenecks, backhauling and passive connectivity.

### Software-defined security

Minimize security risk across your enterprise, including remote and branch locations, with constant visibility, centralized security management and policy from a single dashboard.

## Lumen® SD-WAN solutions feature comparison chart

● Available    ◐ Limited    ○ No available

Feature	Lumen® SD-WAN with Versa Networks	Lumen® SD-WAN with VMware	Lumen® SD-WAN with Cisco Viptela	Lumen® SD-WAN with Cisco Meraki
Intelligent routing and control	●	●	●	◐
Forwarding paths	2 or more	2 or more	2 or more	2
SD-WAN cloud instance support	●	●	●	●
SD-WAN throughput	Upto to 10 Gbps	Upto to 10 Gbps	Upto to 10 Gbps	Upto to 2 Gbps
Wi-Fi	●	●	◐	●
Enterprise firewall	●	●	●	●
Data analytics	●	●	●	◐
Customer self-service	●	●	●	●
Global availability	●	●	●	○
Locations supported	No minimum	10 minimum	10 minimum	No minimum

## Standard options and capabilities

### Connectivity and design

- Can be deployed on-premises, as a virtual machine in the cloud or data center, as a virtual network function (VNF) on a universal CPE (uCPE) with Lumen transport or as an over-the-top solution
- Configuration and management of performance-based, application-aware and user-level routing

### Management and control

- Centralized portals for complete visibility and co-management
- Interactive analytics dashboards and custom reports for monitoring
- Dynamic path selection for load balancing and resiliency
- Intelligent path selection with site split tunneling

### Security and insights

- Robust, integrated security controls (NexGen firewall and unified threat management)
- Policy-driven, centralized control through a single interface



## Why Lumen?

Lumen provides the fastest, most secure platform for next generation applications and data. We are a Tier 1 global WAN provider, delivering award winning solutions<sup>1</sup> and services across ~450K route miles of fiber. With a deeply peered internet backbone and a CDN with 75+ Tbps of edge capacity, we provide traffic steering expertise, enhanced network management and visibility to see global threats before they impact your business.

<sup>1</sup>Awards include Metro Ethernet Forum's 2019 SD-WAN Service Provider of the Year, Worldwide and North America; Frost & Sullivan's 2019 Frost Radar Best Practices Award for Innovation Excellence in the North American Managed SD-WAN Services Market; and Light Reading's Leading Lights 2020 Finalist for Most Innovative SD-WAN Service.

866-352-0291 | [lumen.com](https://lumen.com) | [info@lumen.com](mailto:info@lumen.com)

Services not available everywhere. Business customers only. Lumen may change, cancel or substitute products and services, or vary them by service area at its sole discretion without notice. ©2024 Lumen Technologies. All Rights Reserved.

**LUMEN**<sup>®</sup>  
TECHNOLOGIES